

QUARTERLY ACTIVITIES REPORT

JUNE 2016

CORPORATE ACTIVITY

During the quarter Dynasty Resources Limited (Dynasty or the Company) undertook the following activities:

- A Placement to raise \$1.25 million, which will be used to fund mineral exploration and potential mineral exploration acquisitions and working capital.
- Completed a review of the lithium potential of the North Shaw project, concluding that there was high prospectivity in what is a significant tenement holding along Strike and within 3km of the large Pilgangoora Lithium resources on Altura Mining (ASX:AJM) and Pilbara Minerals (ASX: PLS) grounds.
- Commencement of reconnaissance mapping and sampling with the pegmatite occurrences confirmed, including two large pegmatites of over 100m width and up to 1km length. Pegmatite emplacements along the contact of the greenstone belt and the granite batholith have been confirmed.
- A bedrock drilling campaign in the northern part of North Shaw to test for lithium bearing pegmatites within the Pilgangoora lithium corridor is planned.
- Contributed \$1.2 million to Shanghai Chen Mao Finance Lease Co Ltd (SCML), in which the Company has a 75% equity interest, to support the development of SCML's financial leasing business. DMA's strategic objective for SCML is that it will be cashflow positive and will in the medium term provide financial support for DMA's exploration activities.

EXPLORATION ACTIVITIES

Dynasty owns tenement E 45/2728-I that sits adjacent to significant lithium resources in the Pilgangoora Area of the East Pilbara region in Western Australia. During the quarter Dynasty completed an initial evaluation of the lithium potential of the tenement and considered the ground highly prospective with known pegmatites in the area, a continuation of the Pilgangoora mineralised corridor through the tenement and large areas of lithologies conducive to the intrusion of lithium pegmatites.

Ground work was commenced with reconnaissance mapping and sampling searching for outcropping pegmatites within the tenements. This work identified two large pegmatite bodies, one in the southern part of the tenement and one in the northern section. Numerous other pegmatites were located throughout the tenement and 146 rock chip samples were collected for analysis. While no lithium minerals were observed, the emplacement of these large pegmatites indicates the potential of the area to host a lithium bearing pegmatite body. Preliminary work suggests the contact zone between the granite batholith and metamorphic units has been the focal point of pegmatite intrusion, with pegmatites intruding the metamorphic zone preferentially. The identification of pegmatites along the contact with the Pilgangoora greenstone belt and mafic enclaves within the batholith is highly encouraging. Reconnaissance mapping indicates that this contact zone continues under cover in the north of the tenement. This zone is within the Pilgangoora Lithium corridor and is considered the most prospective zone for a lithium resource.

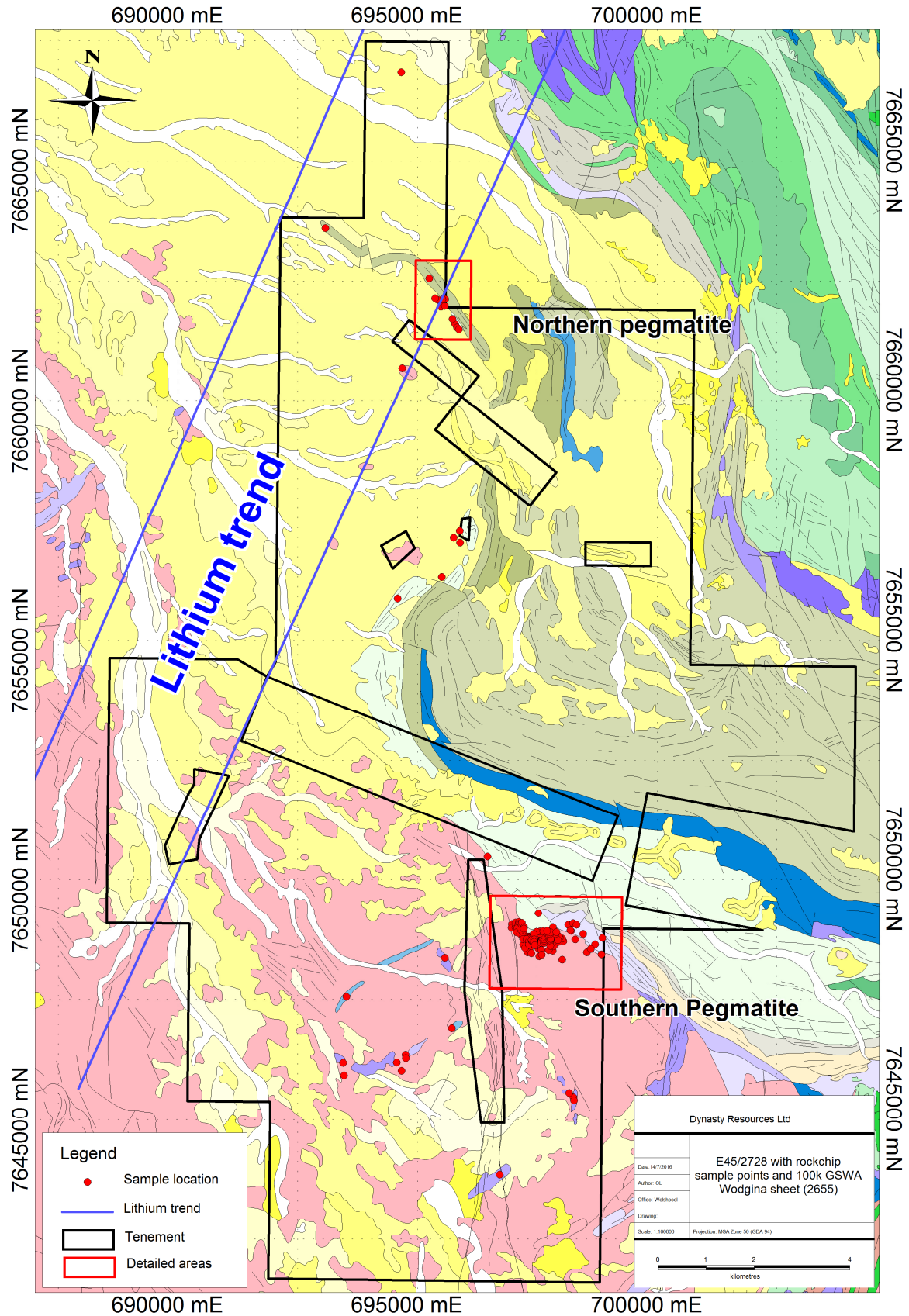


Figure 1 Simplified Geology and regional mineralisation with location of large pegmatite body located by Dynasty resources -North Shaw Project

Work in the next quarter will focus on bedrock drilling in the northern section of the tenement along the interpreted contact zone to determine the extent of pegmatite intrusions and their lithium content.

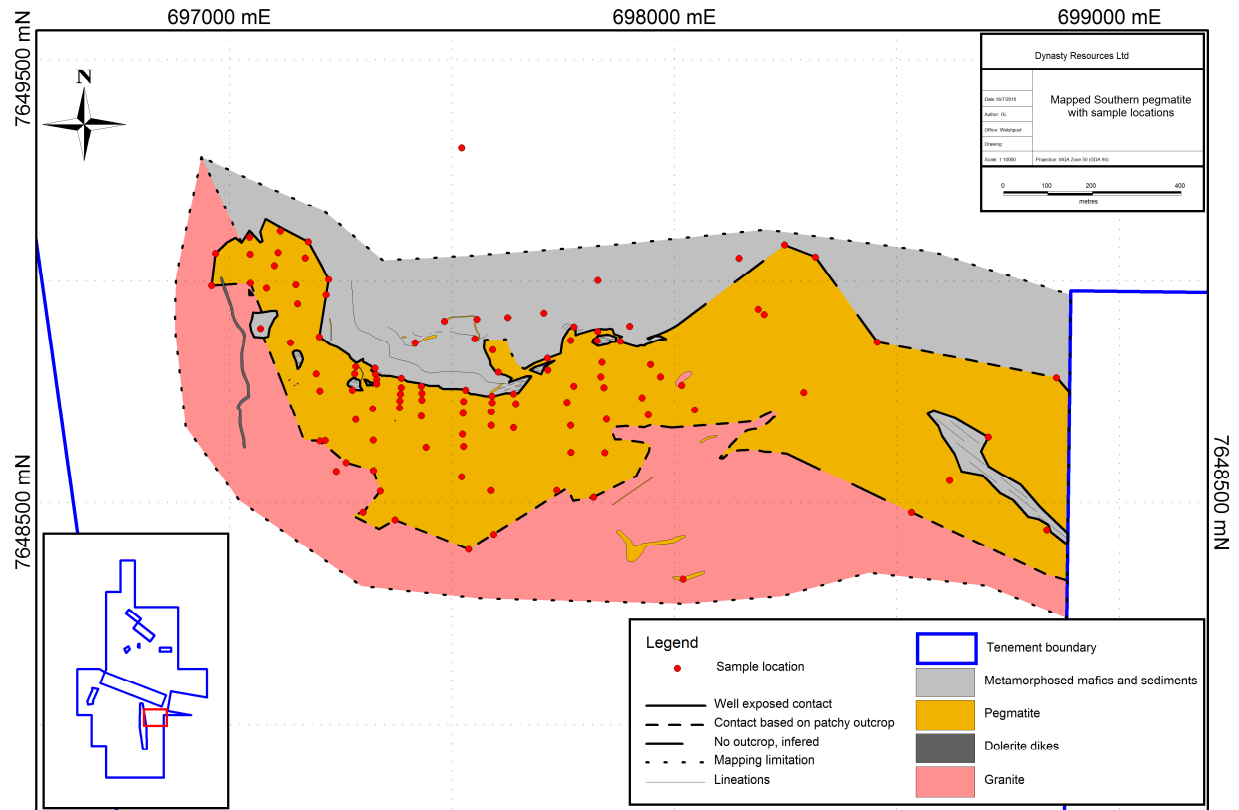


Figure 2 Mapped southern Pegmatite zone with sample points



Figure 3 Pegmatite outcrop example

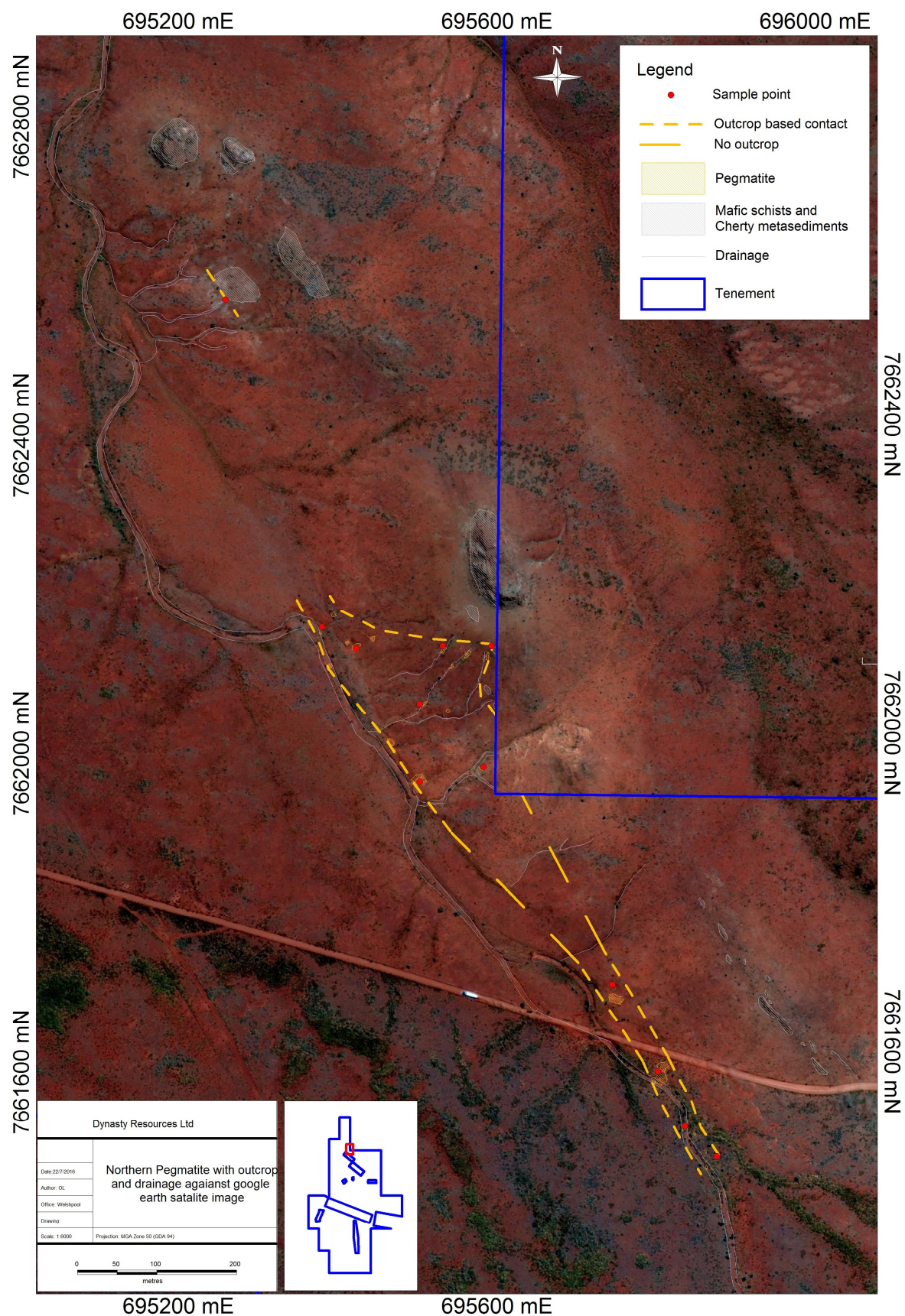


Figure 4 Northern Pegmatite outcrop map

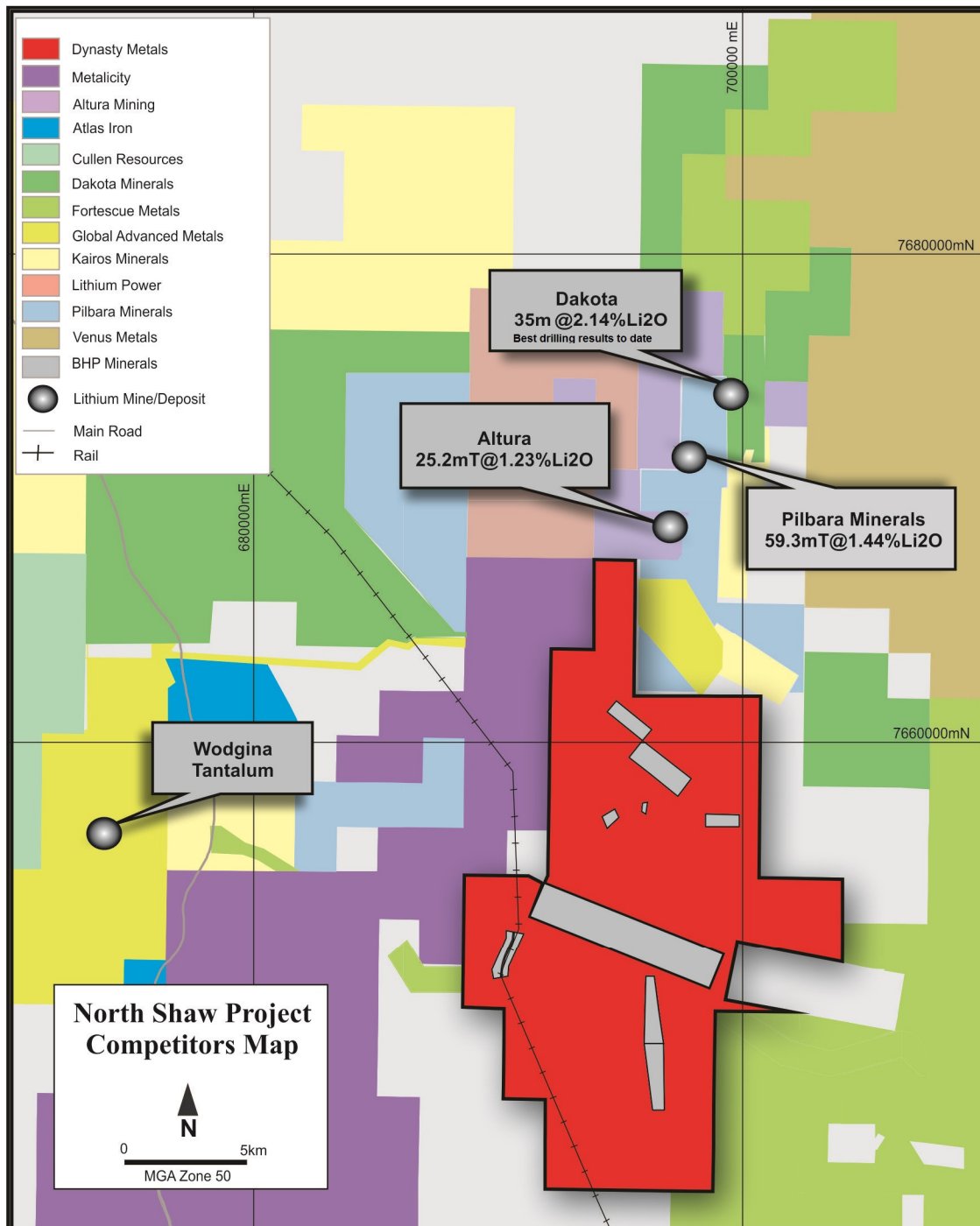


Figure 5 North Shaw Project regional competitor map

The tenement is surrounded by competitors actively searching for lithium. Figure 5 shows the location of the tenement with respect to the major lithium occurrences in the area, and the competitor activity.

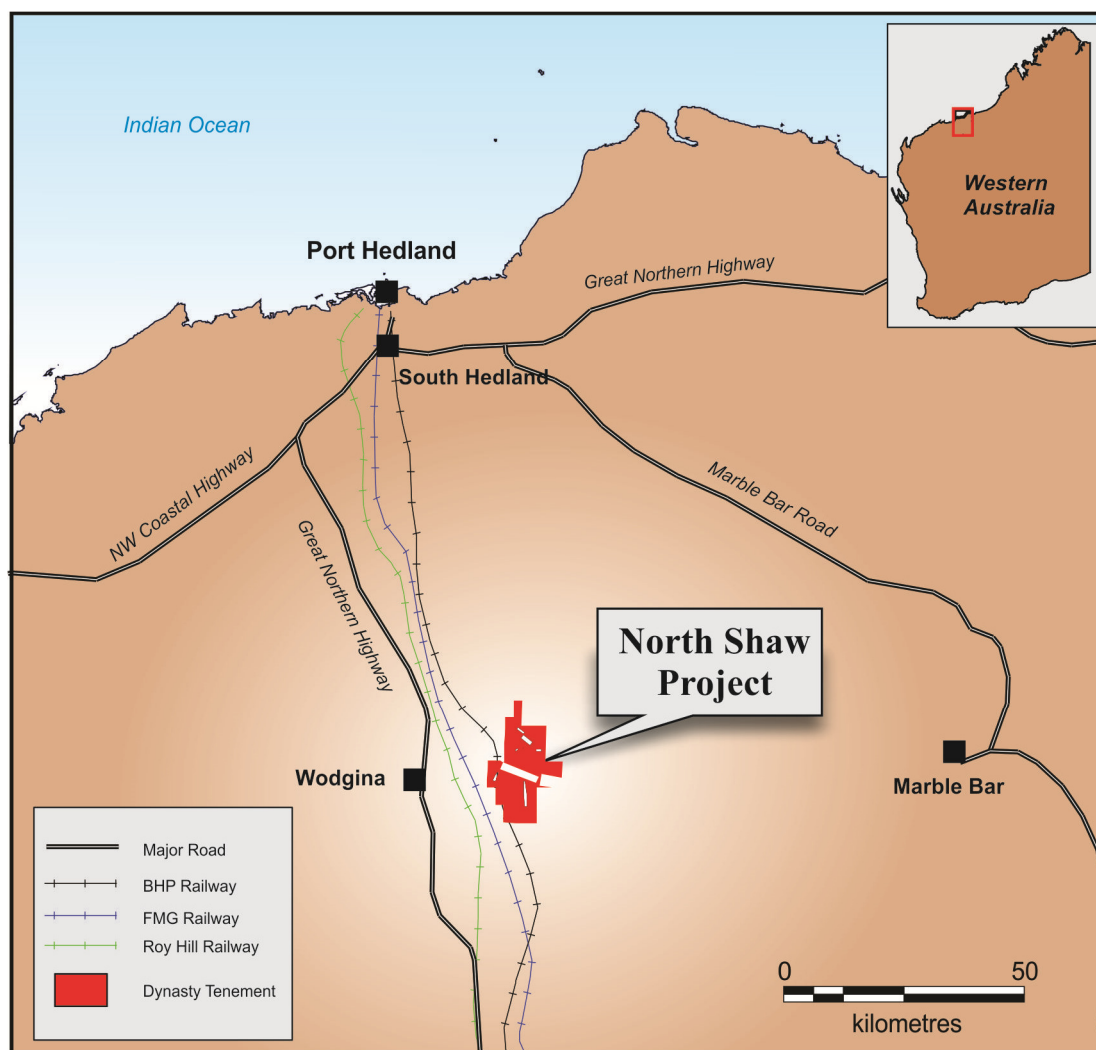


Figure 6 North Shaw - Project location

MINING TENEMENTS HELD AT END OF QUARTER

Project	Lease	Commodity	Holder (if not DMA)	Locality
Prairie Downs ⁽³⁾	E52/2024	Iron - Fe		WA
Prairie Downs ⁽³⁾	E52/2464	Iron - Fe		WA
Tropicana North	E38/2838	Gold - Au		WA
Atlas Iron JV ⁽¹⁾	E45/2728	Iron - Fe		WA
Stanley ⁽²⁾	E69/2266	Uranium - U	Goldstone Resources Pty Ltd	WA
Hyden ⁽²⁾	E77/2040	Gold - Au	Goldstone Resources Pty Ltd	WA

⁽¹⁾ The Company has entered into an agreement with Atlas Iron in relation to the iron ore rights, with an entitlement to receive a 2% royalty from production

⁽²⁾ The Company holds a 20% interest in Goldstone Resources Pty Ltd

⁽³⁾ The Company has entered into a free carriage option agreement

CHANGES IN INTERESTS IN TENEMENTS DURING QUARTER

During the quarter, as announced on 8 June 2016, the Company relinquished its Prairie Downs tenement E52/1927 and voluntarily partially surrendered E52/2024 (13 blocks surrendered, 38 blocks remaining) and E69/2266 (51 blocks surrendered, 5 blocks remaining).

COMPETENT PERSONS STATEMENT

The information in this report that relates to exploration results and mineral resource calculations has been compiled by Mr David Jenkins, a full time employee of Terra Search Pty Ltd, geological consultants employed by Dynasty Resources Limited. Mr Jenkins is a Member of the Australian Institute of Geoscientists and has sufficient experience in the style of mineralisation and type of deposit under consideration and the activity which they are undertaking to qualify as Competent Persons as defined in the 2012 Edition of the Australasian Code for Reporting of Exploration Results ("JORC Code"). Mr Jenkins consents to the inclusion in the report of the matters based on the information in the form and context in which it appears.

CORPORATE PROFILE

Dynasty Resources Limited
ABN 80 110 385 709

Directors Details

Lewis Tay	Chairman and Managing Director
Bin Wang	Independent Director
Qingzhou Yuan	Non-executive Director

Company Secretary

Louise Edwards

Registered Office and Principal Place of Business

83 Brisbane Street
Perth WA 6000

Tel: +61 8 6316 4414

Fax: +61 8 6316 4404

Email: admin@dynastyresources.com.au

Website: www.dynastyresources.com.au

Share Details

At 30 June 2016 there were 460,296,673 ordinary shares on issue.