

10 September 2014

ASX Announcement

## GRANT OF NEW COPPER-GOLD TENEMENT

Dynasty Resources Ltd (ASX:DMA) is pleased to announce the granting of tenement E08/2495, covering an area of 125 Sub-blocks (394sqm) within a prospective part of the Gascoyne region. The tenement is located in an area that possesses numerous historical mineralisation occurrences that appear to be associated with lithologies and structures that continue through the tenement.

Local mineralisation includes gold and copper, with several identified occurrences of both within the tenement boundaries as well as along strike, outside the tenement. A preliminary desktop study is suggestive of prospective geology and mineralisation in the area.

The Gascoyne is a largely underexplored terrain, despite a long history of exploration interest. This region generally fails to attract the high-level of exploration expenditure of the more established WA regions.

Dynasty considers there is potential for significant mineralisation to be identified with conventional exploration techniques.

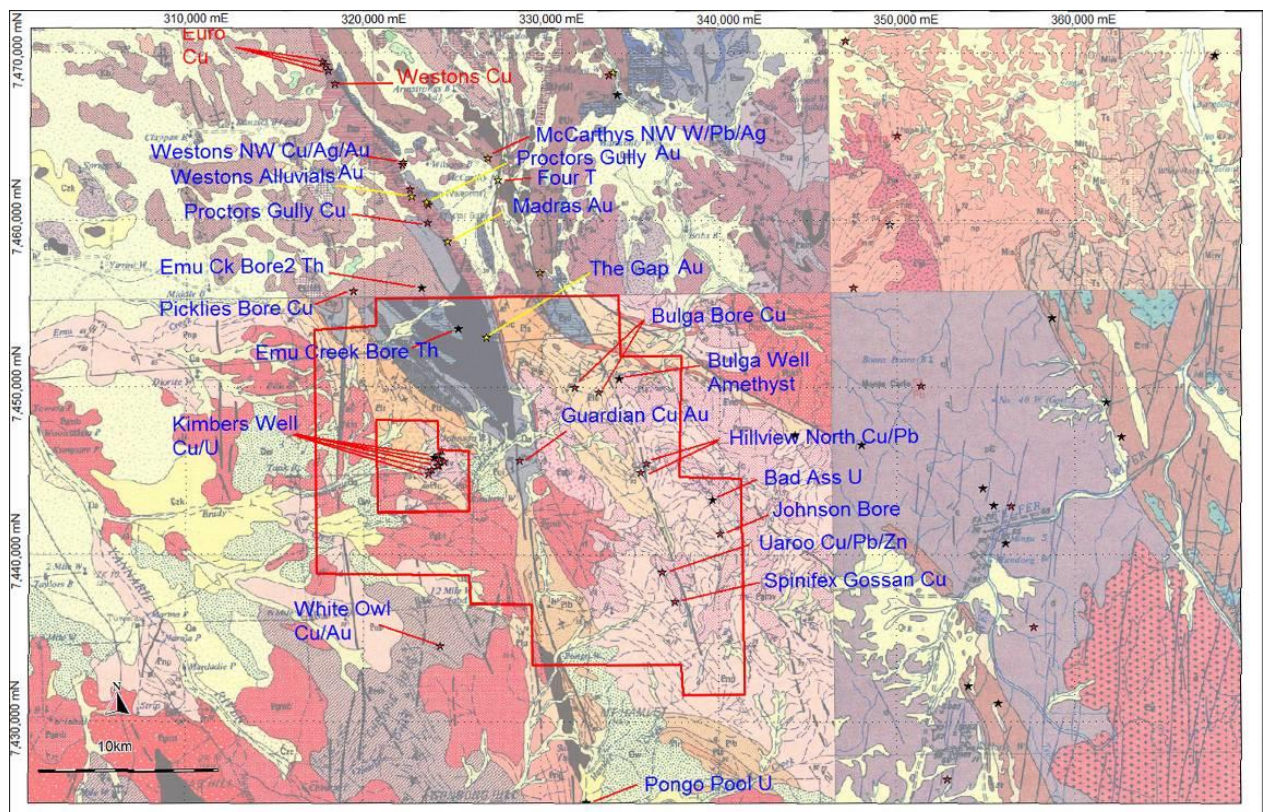
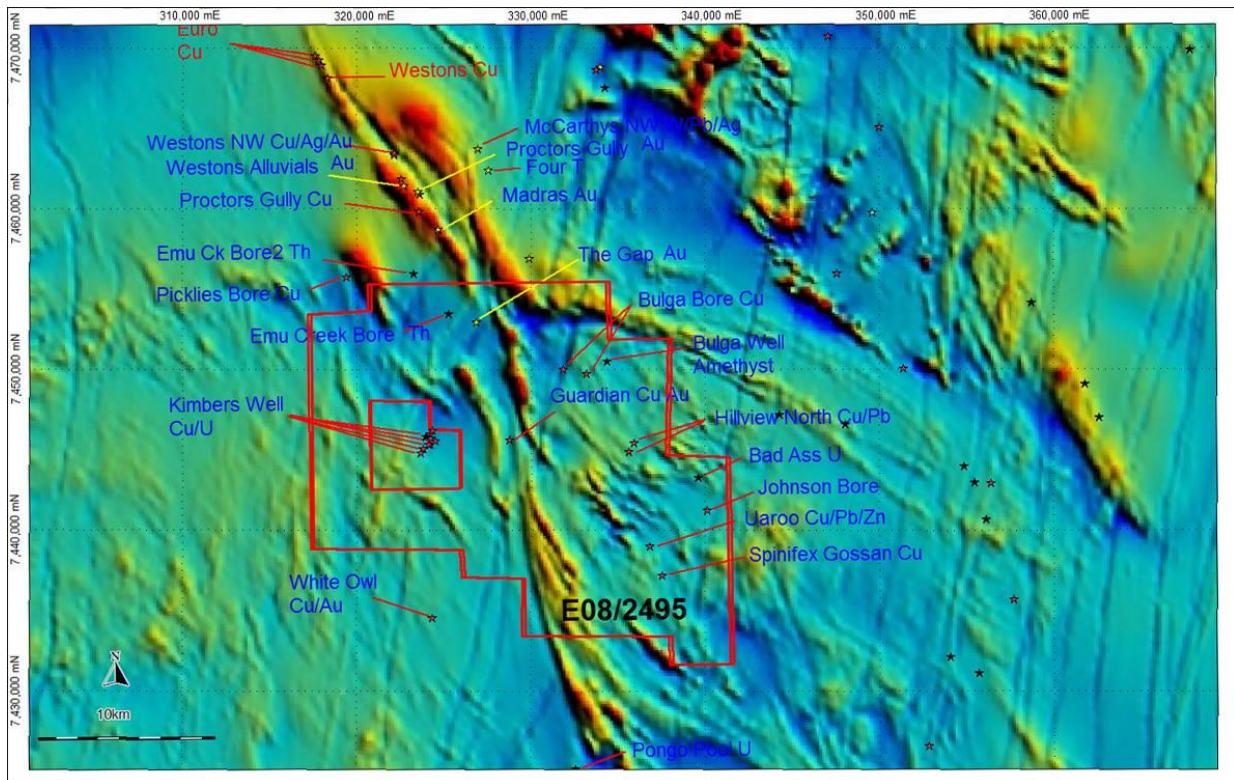


Figure 1 DMA Tenement E08/2495 Mineral occurrences and Geology

Figure 1 above depicts a large number of identified occurrences in and around E08/2495, a number of which have been historically mined. The mapped geology (1:250,000 Winning Pool geological sheet) delineates a number of geological packages and major structures that are clearly aligned with these mineralisation trends.



**Figure 2 E08/2495 and local known mineralisation overlain on DMP magnetics**

Geophysical data helps expand and delineate these trends as shown in the Figure 2 above. The correlation between the established mineralisation trends and the geophysical structures is encouraging, both from an ease of interpretation aspect, and because the geophysical signatures diverge from the mapped geological trends in a number of places.

We consider there to be highly prospective mapped geological packages and structures that are directly aligned with a number of established gold and copper mineralisation occurrences within, and in close proximity to the area.

Historical gold occurrences in this area are associated with a range of mafic packages; occur at or about the contact between packages of felsic volcanics/plutonics as well as occurring in association of local migmatite/paragneisses. A selection of these lithologies are present throughout the tenement with a number of known occurrences in and about the tenement indicating that mineralising fluids are present.

Gold and copper are the two most common commodities identified in this region, however lead, silver, nickel, uranium, thorium and even amethyst are identified as occurring throughout the area.

Work will commence with analysis of previous exploration work followed by a reconnaissance trip to the area to plan further work.

### **COMPETENT PERSONS STATEMENT**

*The information in this report that relates to exploration results and mineral resource calculations has been compiled by Mr David Jenkins, a full time employee of Terra Search Pty Ltd, geological consultants employed by Dynasty Metals Australia Ltd. Mr Jenkins is a Member of the Australian Institute of Geoscientists and has sufficient experience in the style of mineralisation and type of deposit under consideration and the activity which they are undertaking to qualify as Competent Persons as defined in the 2012 Edition of the Australasian Code for Reporting of Exploration Results ("JORC Code"). Mr Jenkins consents to the inclusion in the report of the matters based on the information in the form and context in which it appears.*

Enquiries:  
Lewis Tay  
Managing Director  
(08) 6316 4414