

# Dynasty Metals Australia Ltd

AGM PRESENTATION  
24<sup>th</sup> NOVEMBER 2009

Malcolm Carson  
Technical Director



## Dynasty Metals Australia Ltd

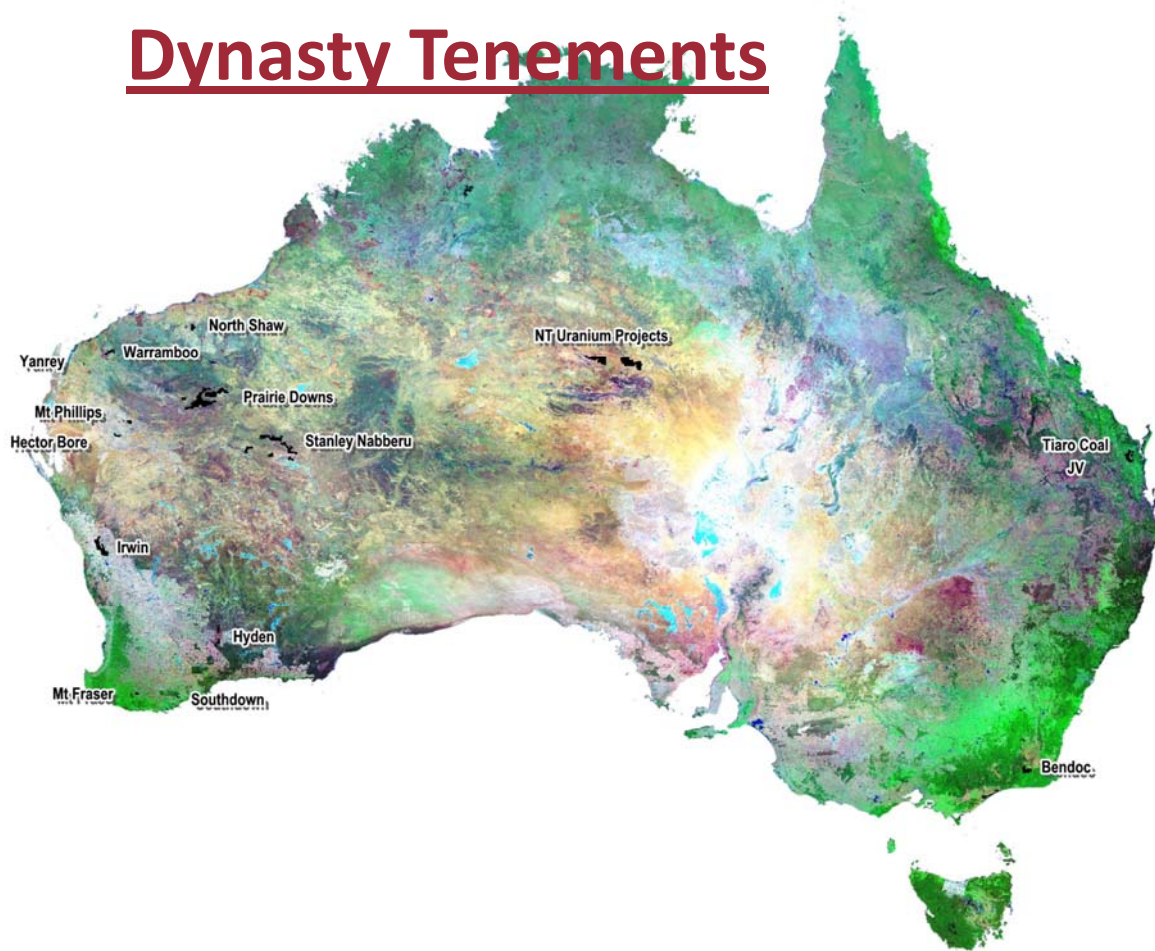
- ASX Code: DMA
- Issues Shares: 65,791,312  
ASX listed options (DMAOA) 20,917,029, exercisable @ \$0.35, on or before 28 February 2010
- Total Number of Shareholders: 560+
- Options - unlisted:
  - 500,000, exercisable @ \$0.30, on or before 31 December 2009
  - 3,290,000, exercisable @ \$0.20, on or before 30 November 2009
  - 500,000, exercisable @ \$0.20, on or before 1 September 2010
- Cash Position: \$2.8m
- Key Projects:
  - Iron Ore: Prairie Downs W.A.
  - Coal and Coal Seam Gas: Irwin (WA)
  - Uranium: WA and NT
  - Copper and Base Metals: Stanley, Nabberu (WA)
  - Gold: Bendoc (VIC)

Directors:  
Ian Levy – Chairman  
Lewis Tay  
Malcolm Carson  
Richard Oh  
Graham Anderson

November 2009



# Dynasty Tenements



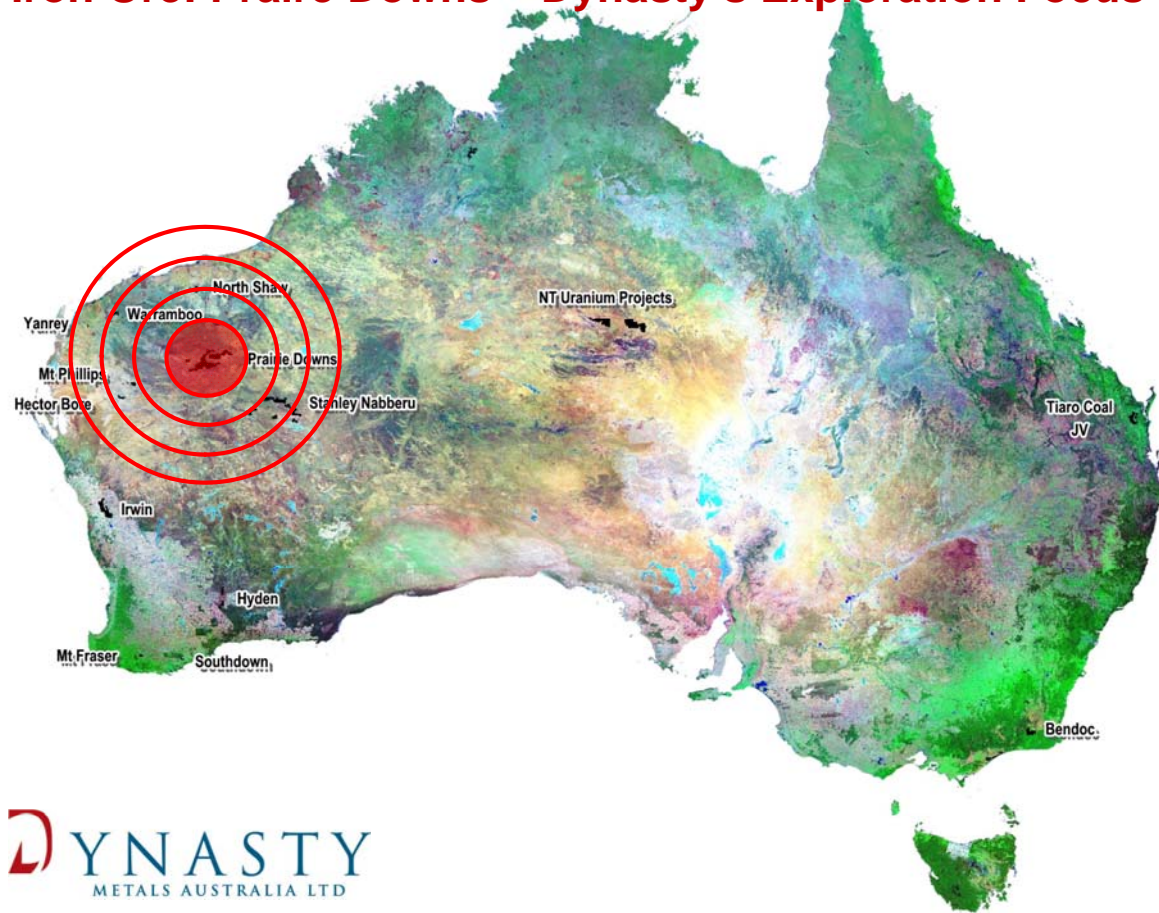
## EXPLORATION FOCUS

Prairie Downs Iron Ore Project located west and south of Mt Newman in the Pilbara Western Australia

Exploration targets include:

- hard rock deposits of Marra Mamba
- channel iron deposits
- basal iron conglomerate deposits

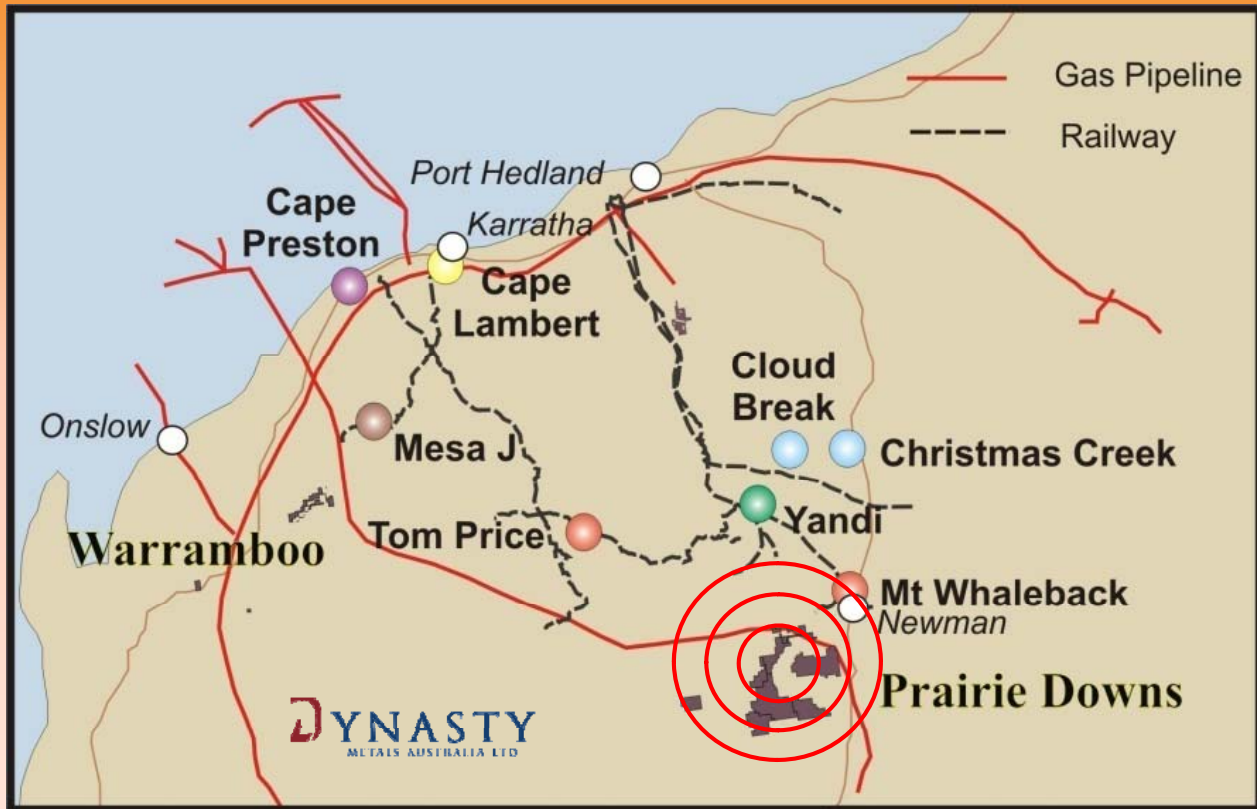
## Iron Ore: Praire Downs – Dynasty's Exploration Focus



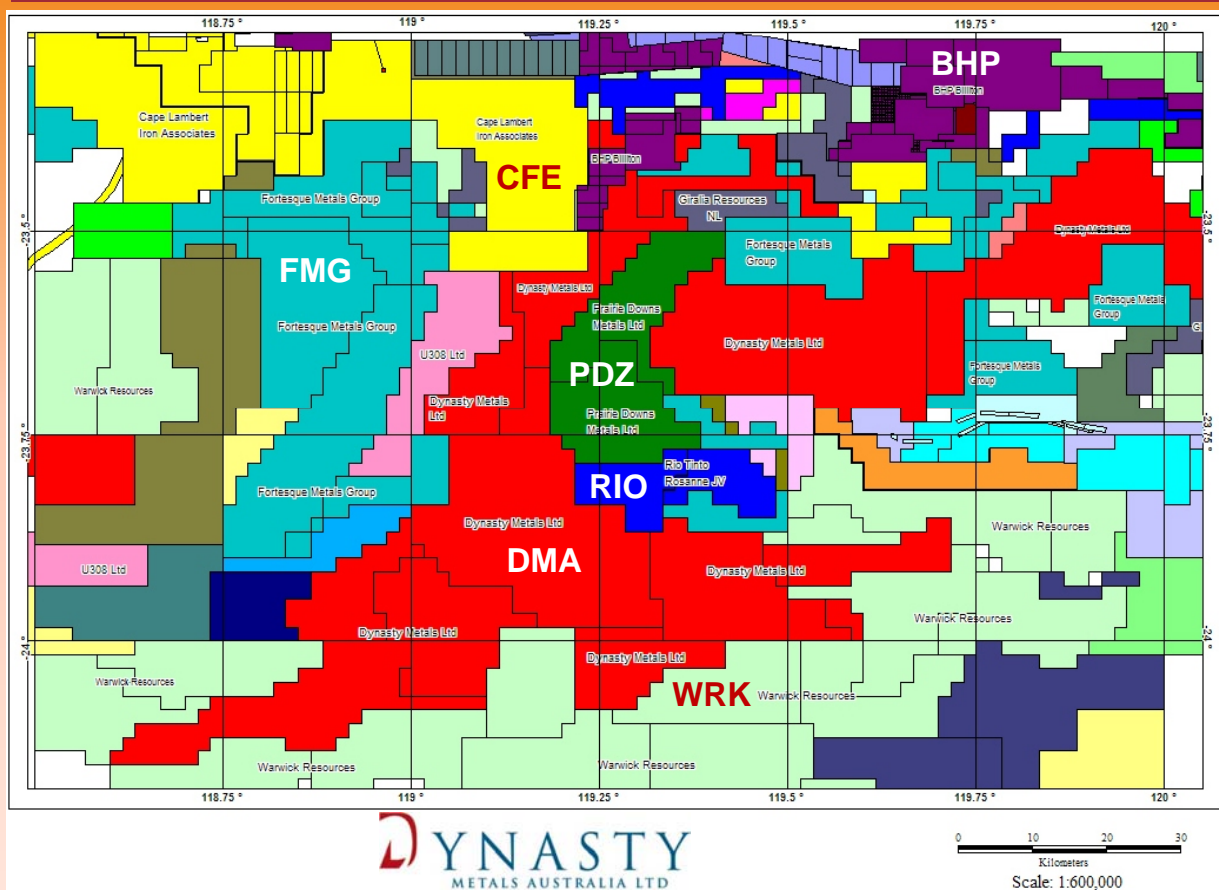
## PRAIRIE DOWNS IRON ORE PROJECT

- 3,591km<sup>2</sup>, South and West of Mt Newman
- Five Priority One Targets:
  1. Marra Mamba Formation - outcrop
  2. Marra Mamba Formation - hidden deposits
  3. Channel Iron Deposits
  4. Detrital Iron Deposits (identified 400Mt in-situ, target 1Bt)
  5. Basal Conglomerate containing Haematitic-iron Clasts
- Second priority, base metals and uranium

## Location of Prairie Downs Project

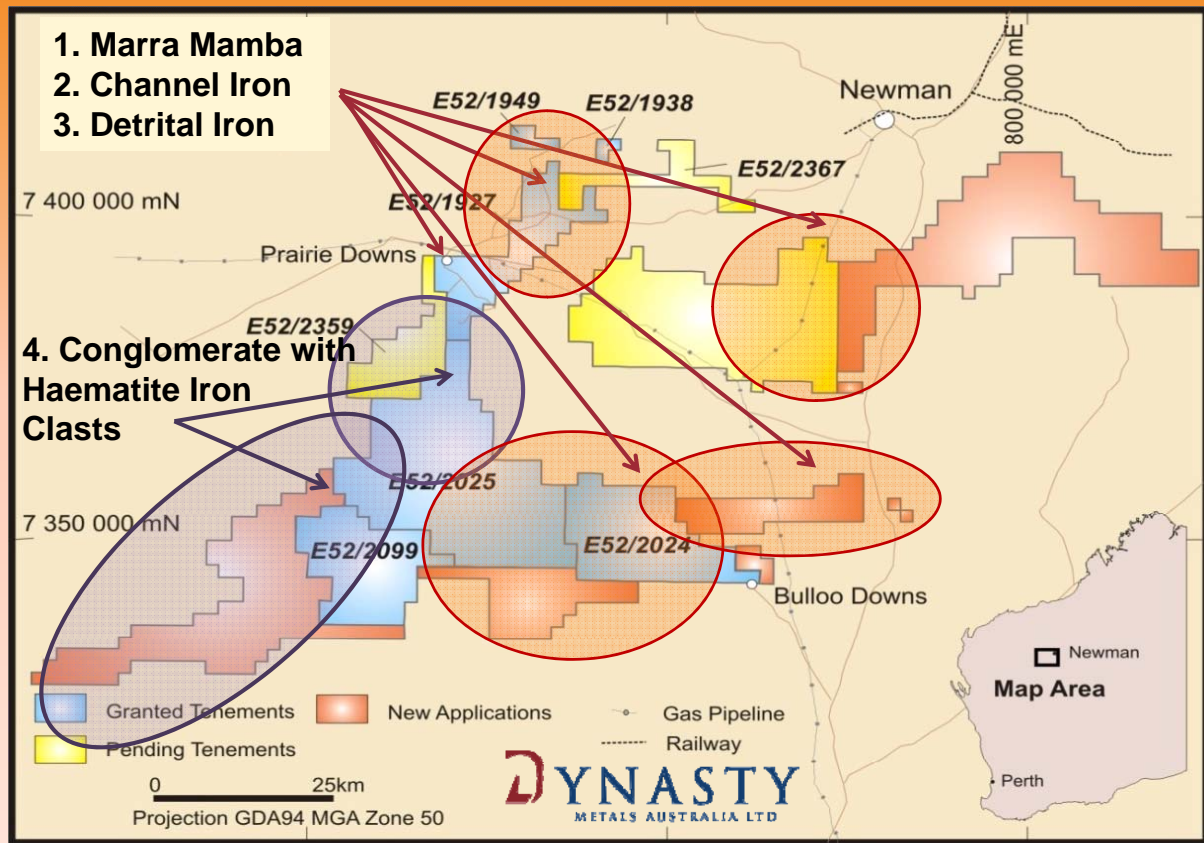


# Prairie Downs Tenements & Neighbours

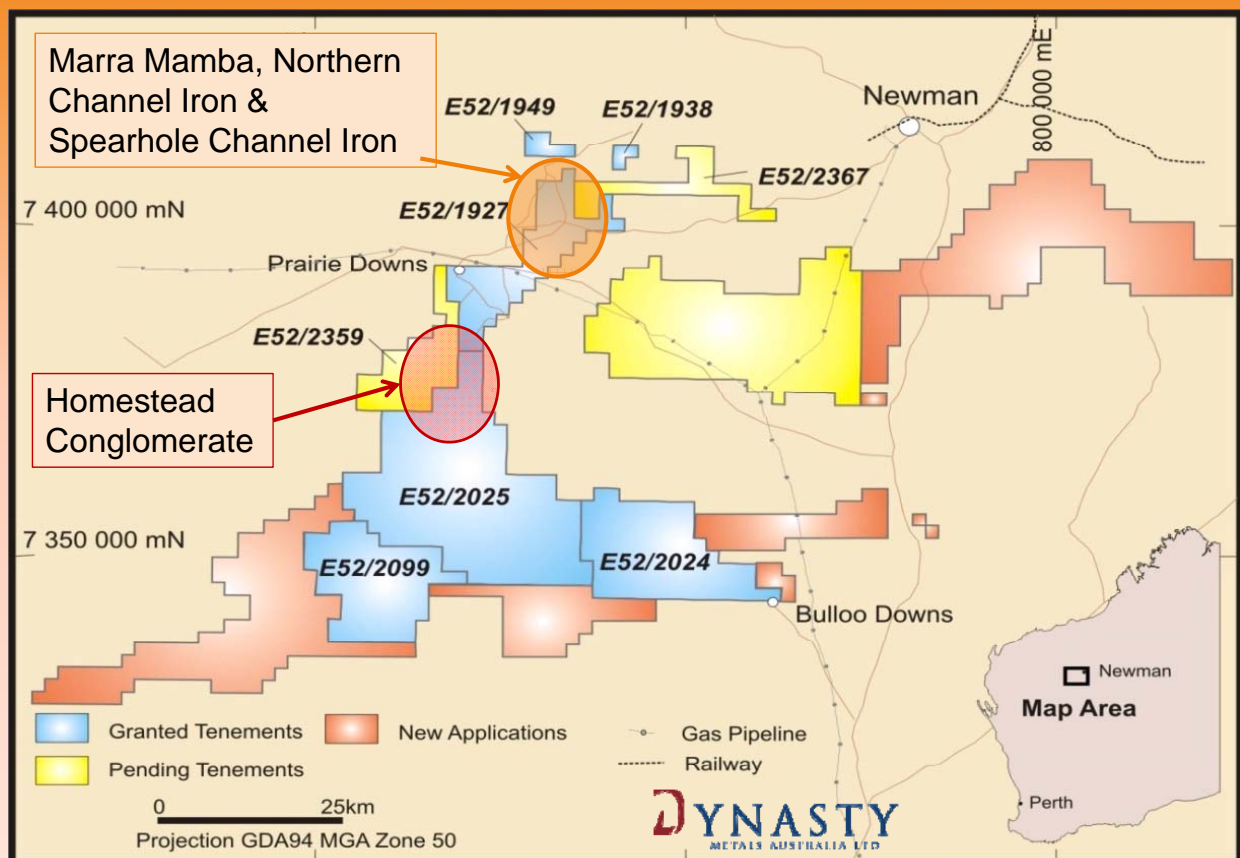




# Exploration Target Areas



# Priority "1" Target Areas



# 2009 Field Program

- ~10,000m reverse circulation drilling program has confirmed geological models
- Defined:
  - 1 - Deposit of Marra Mamba Formation (MMF)
  - 2 - Channel Iron Deposits (CID)
  - 3 - Substantial Detrital Iron Deposits (DID) (~400Mt)
- Collected bulk rock chip samples from the massive Homestead Conglomerate for preliminary beneficiation testwork
- Confirmed target areas for follow-up drilling, including hidden MMF deposits
- Easily accessible terrain for CID and DID, very low overburden

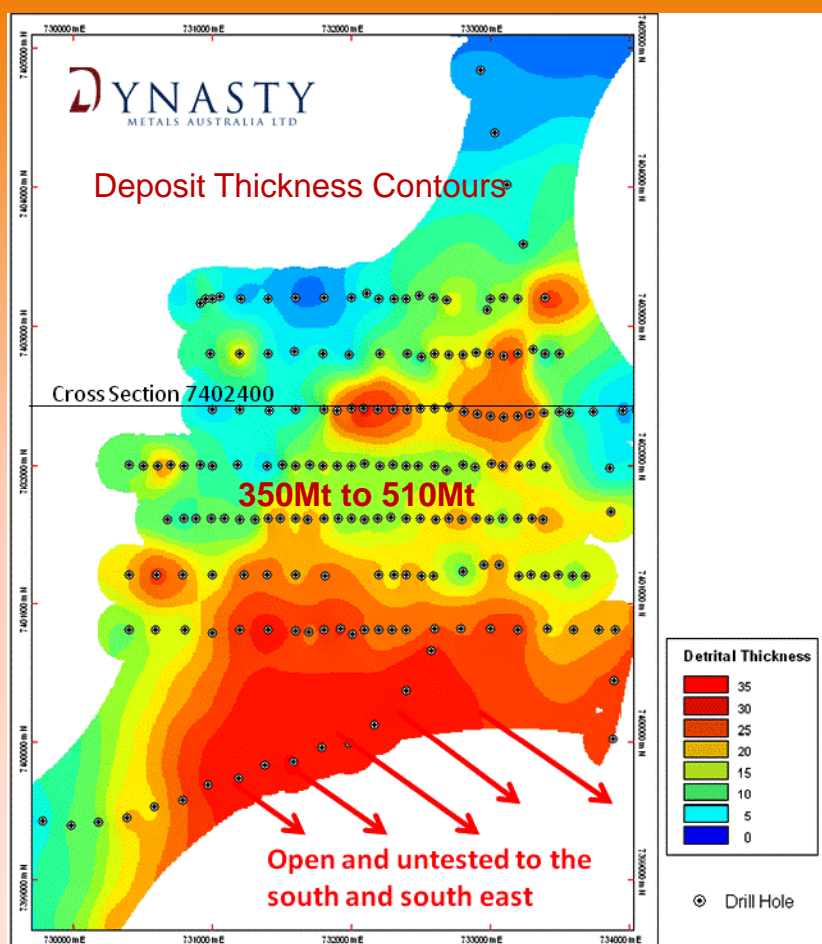
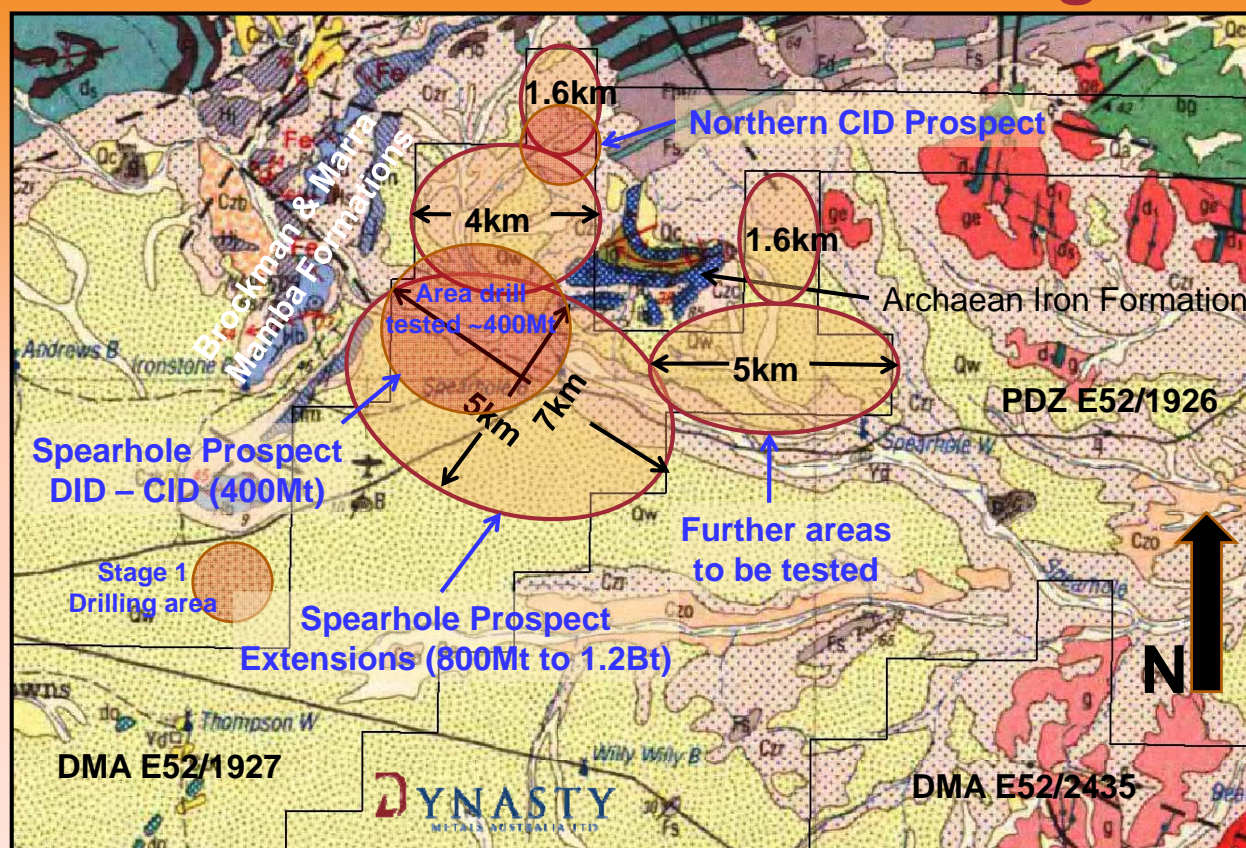


## Geological Results – Conclusions 2009 - 10,000m Drill Program



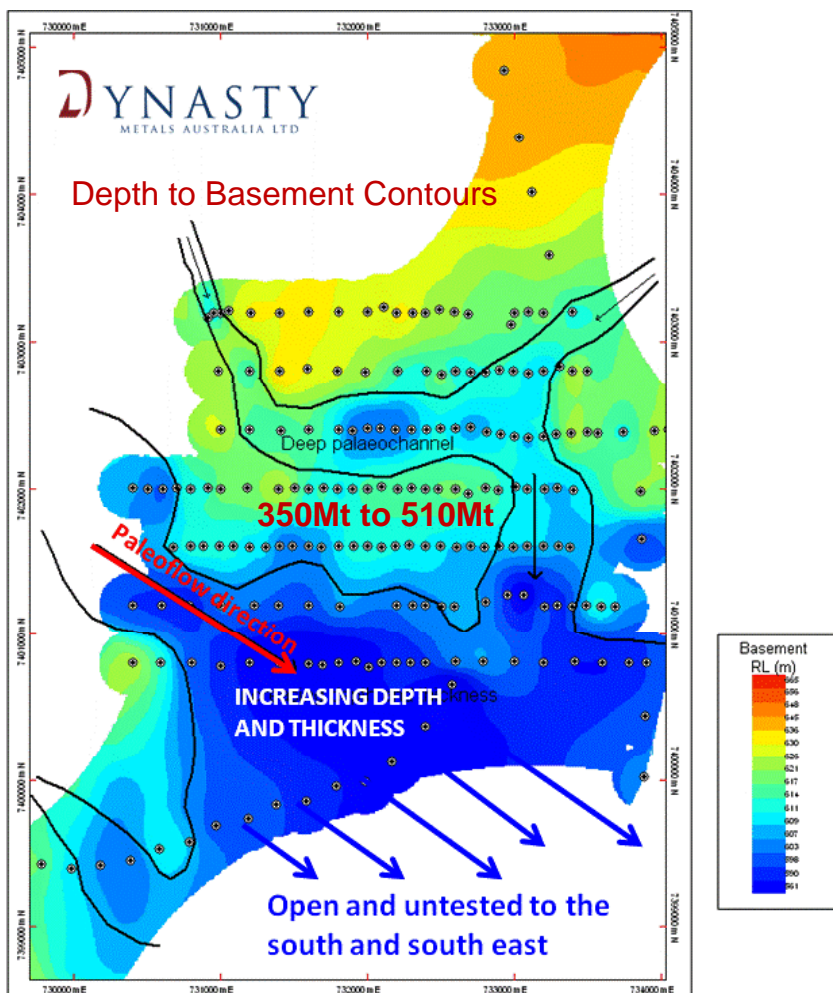
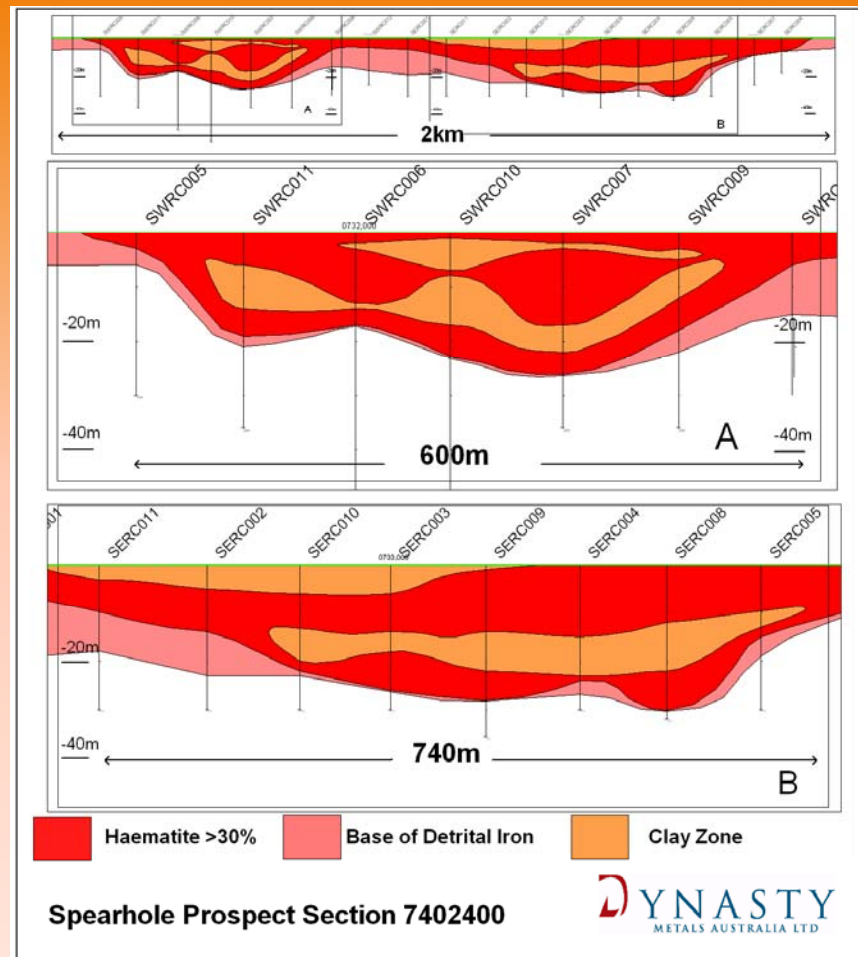


## Defined 400Mt & 1Bt DID Target



**Spearhole  
Detrital Channel  
Iron Deposit  
up to 35m thick  
(from surface)  
in area drill tested  
& containing  
~350 to 510Mt**

## Spearhole Detrital Iron Cross Section 7402400N



**Spearhole  
Detrital Channel  
Iron Deposit  
~350 to 510Mt  
identified from  
2009 drill program**



# Detrital Channel Iron Drilling



# Easily Accessible Terrain



# Easily Accessible Terrain



## Dynasty's Detrital Channel Iron "Exploration Model"



# PRAIRIE DOWNS EXPLORATION MODEL

October 2009

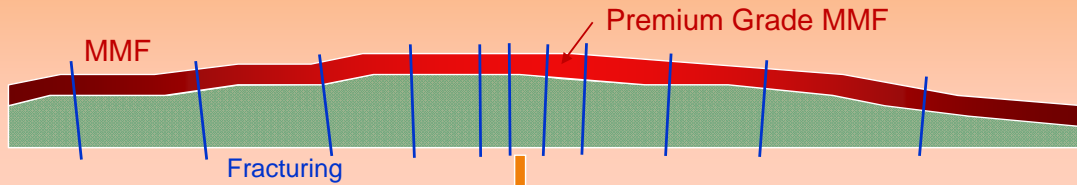
Northwest

Southeast

Marra Mamba Iron Formation  
"MMF"

Premium Grade Zone (top of dome)

Geological time

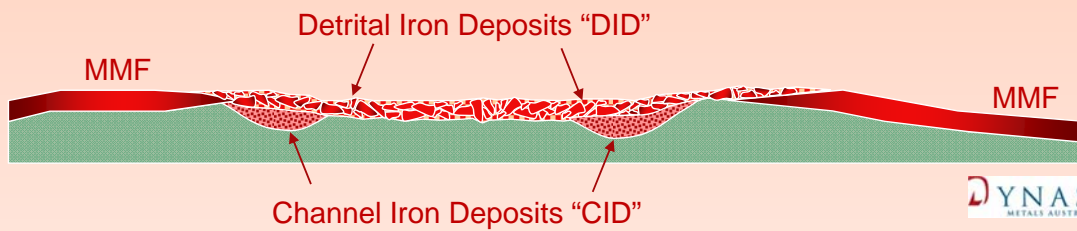


TODAY

BHP Tenements

Dynasty Tenements

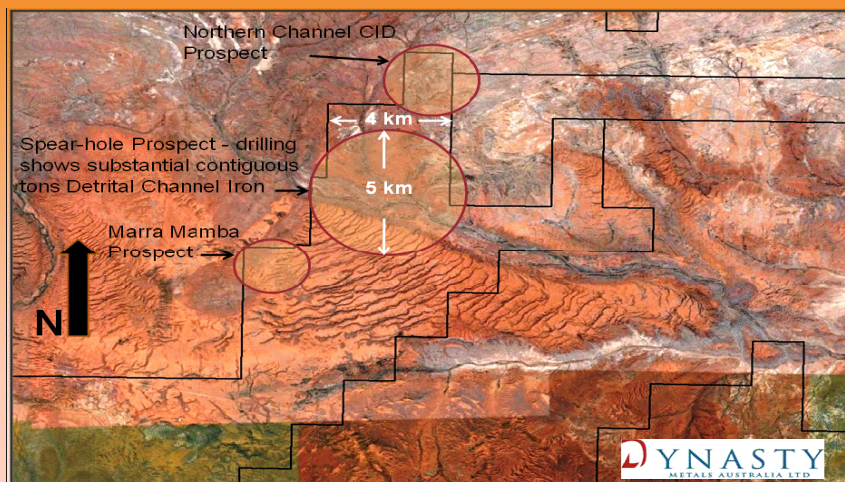
Rio Tinto Tenements



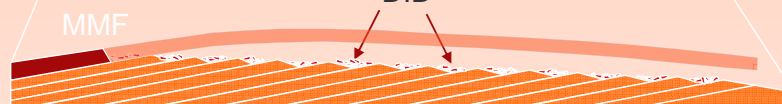
DYNASTY  
METALS AUSTRALIA LTD

# PRAIRIE DOWNS EXPLORATION MODEL

October 2009



Marra Mamba Detrital Iron Deposits  
"DID"



DYNASTY  
METALS AUSTRALIA LTD

© Ian Levy & Malcolm Carson 14 October 2009



# Rock Fragment Tertiary Channel Iron



## Marra Mamba Formation 2009 Drilling

# Marra Mamba - Drilling

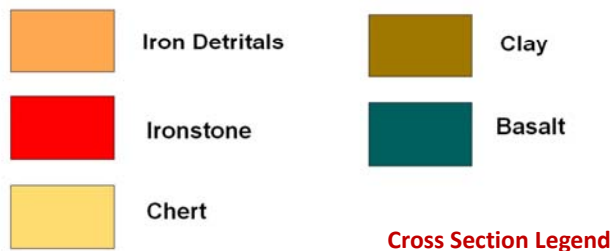
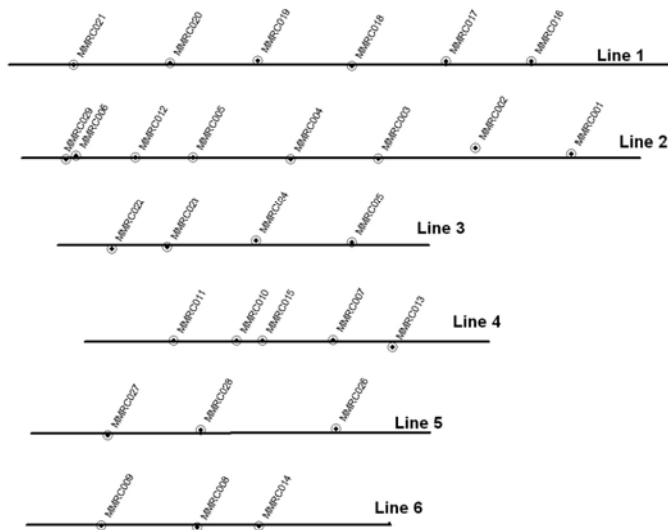


## Marra Mamba Drill Results – Phase 1

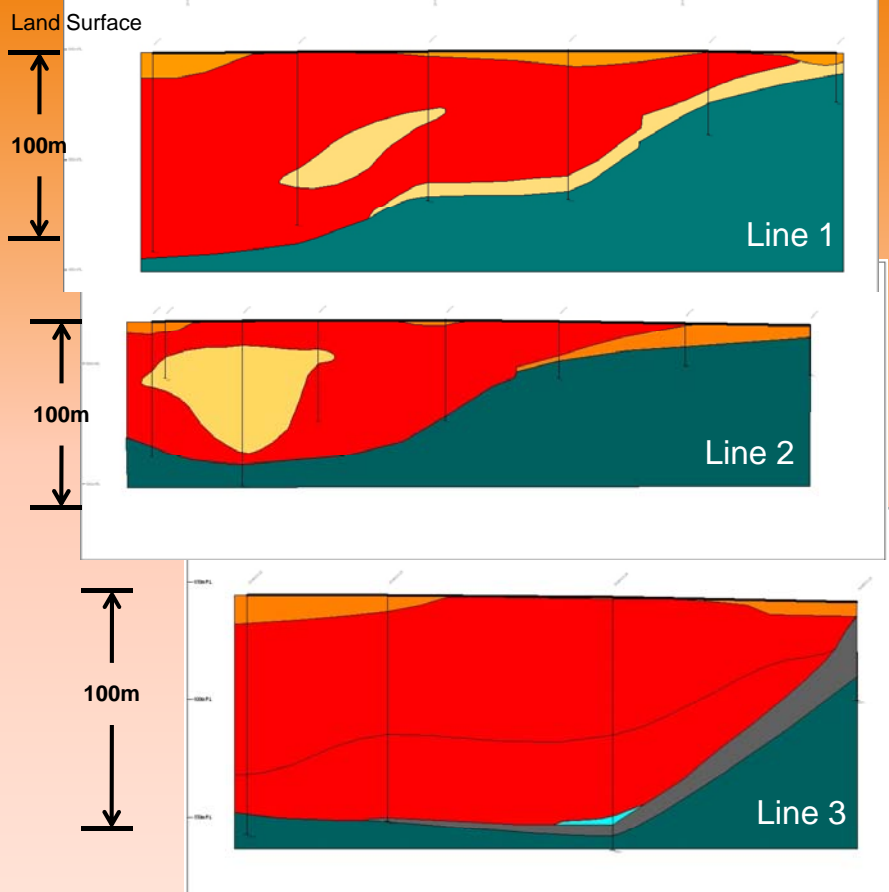
Hole MMRC	Intersection Length	Fe %	CaFe <sup>1</sup> %	Including	Fe %	CaFe <sup>1</sup> %
003	27 metres	53.1%	58.7%	10 metres & 7 metres	52.0% 58.5%	59.0% 64.2%
004	58 metres	56.2%	61.3%	11 metres & 24 metres	60.5% 59.1%	65.5% 64.1%
005	56 metres	50.5%	55.1%	41 metres	54.0%	58.9%
006	6 metres	58.0%	61.8%			
007	42 metres	54.7%	60.5%	18 metres	57.2%	63.0%
009	14 metres	50.9%	54.8%			
010	47 metres	54.1%	58.9%	33 metres	56.3%	61.1%
011	60 metres	50.1%	55.1%	43 metres	51.9%	57.4%
012	10 metres	52.8%	57.5%			
015	43 metres	50.9%	55.2%	14 metres	59.5%	64.0%

<sup>1</sup> CaFe = “calcined or LOI-free grades” calculated as  $(Fe \times 100) / (100 - LOI)$

Results from Phase 2 - pending

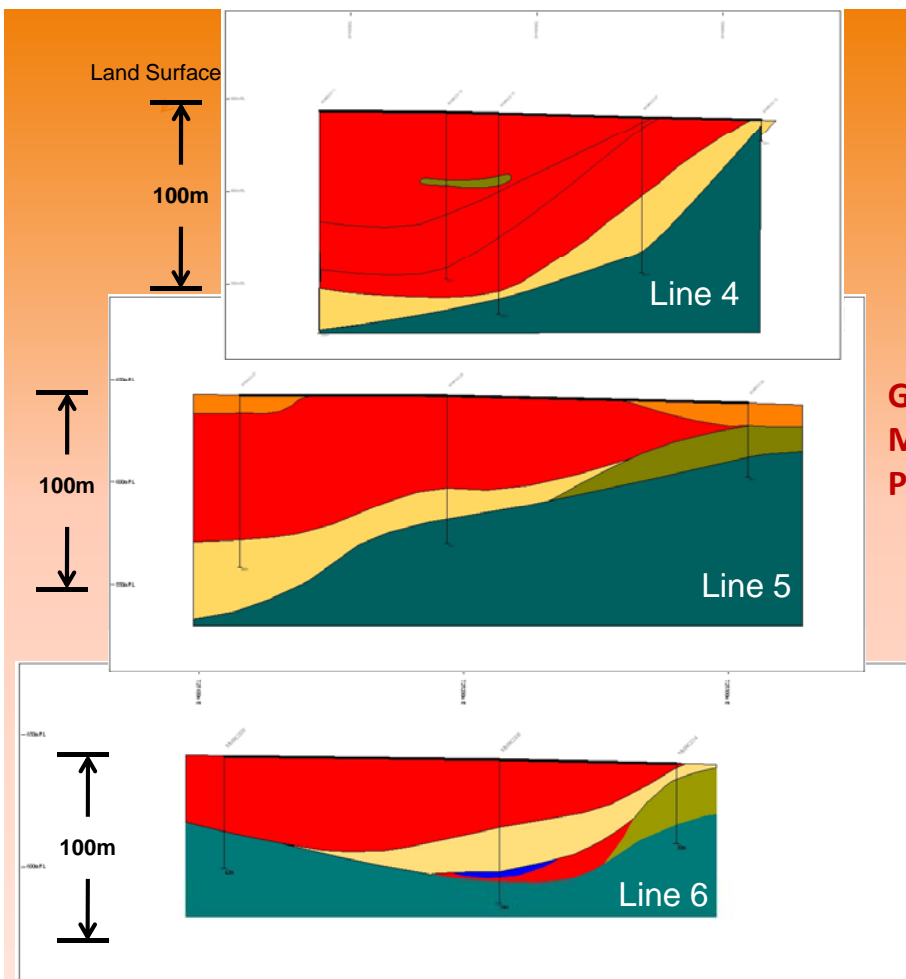


## Phase 1 & 2 - Drill hole collars Marra Mamba Formation



## Geological Cross Sections Marra Mamba Formation Phase 1 & 2 Drilling





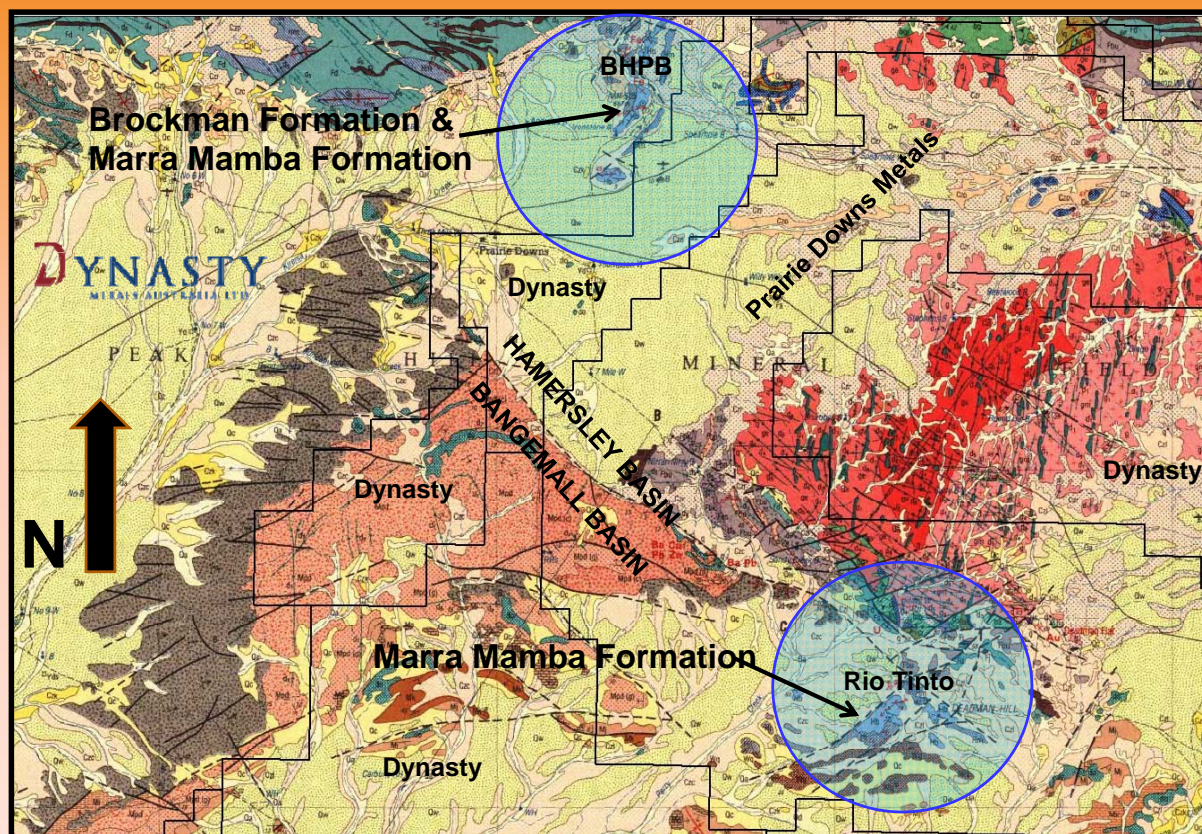
**Geological Cross Sections  
Marra Mamba Formation  
Phase 1 & 2 Drilling**



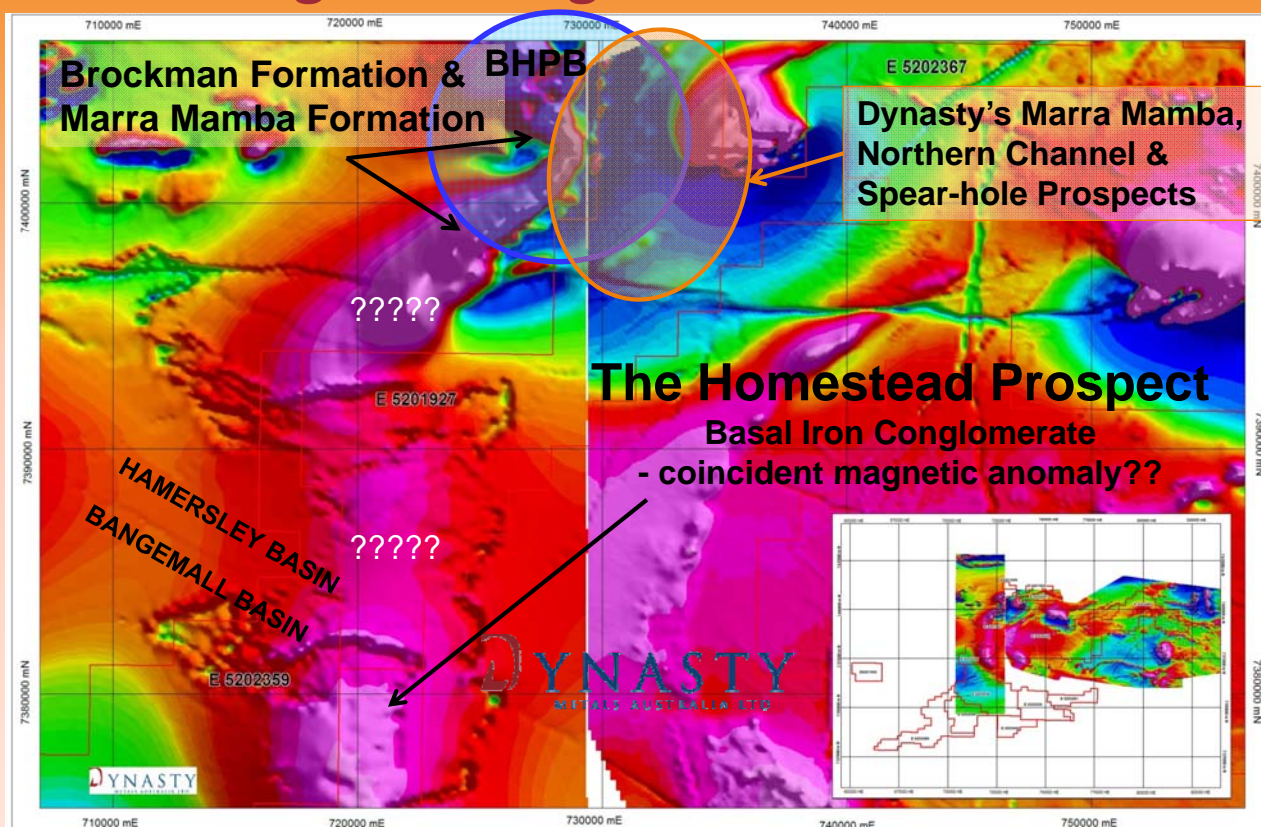
# **Marra Mamba Regional Exploration Potential & Hidden Deposits**



# Scope for Hidden Marra Mamba



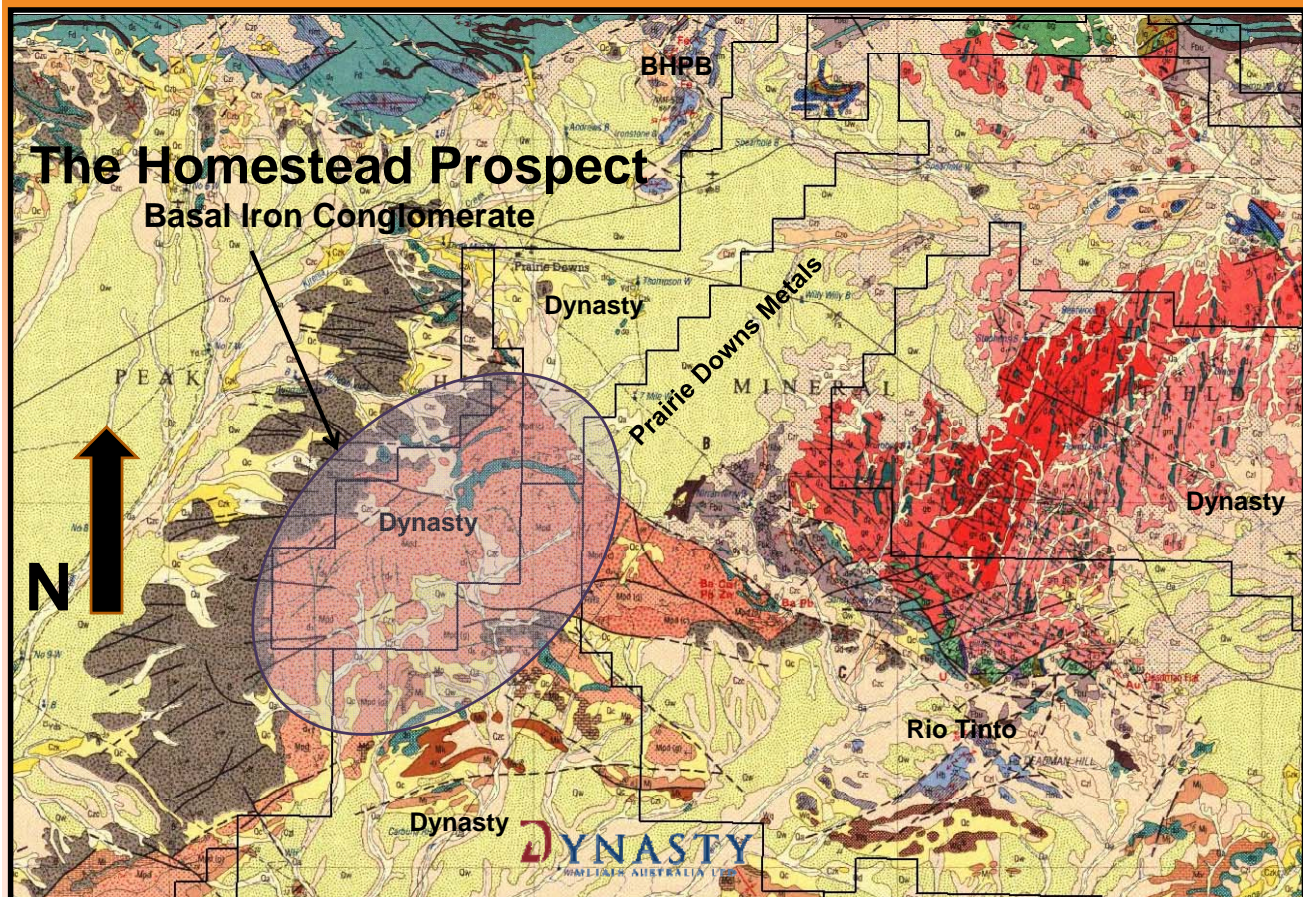
## Marra Mamba – Hidden Targets Regional Magnetic Anomalies





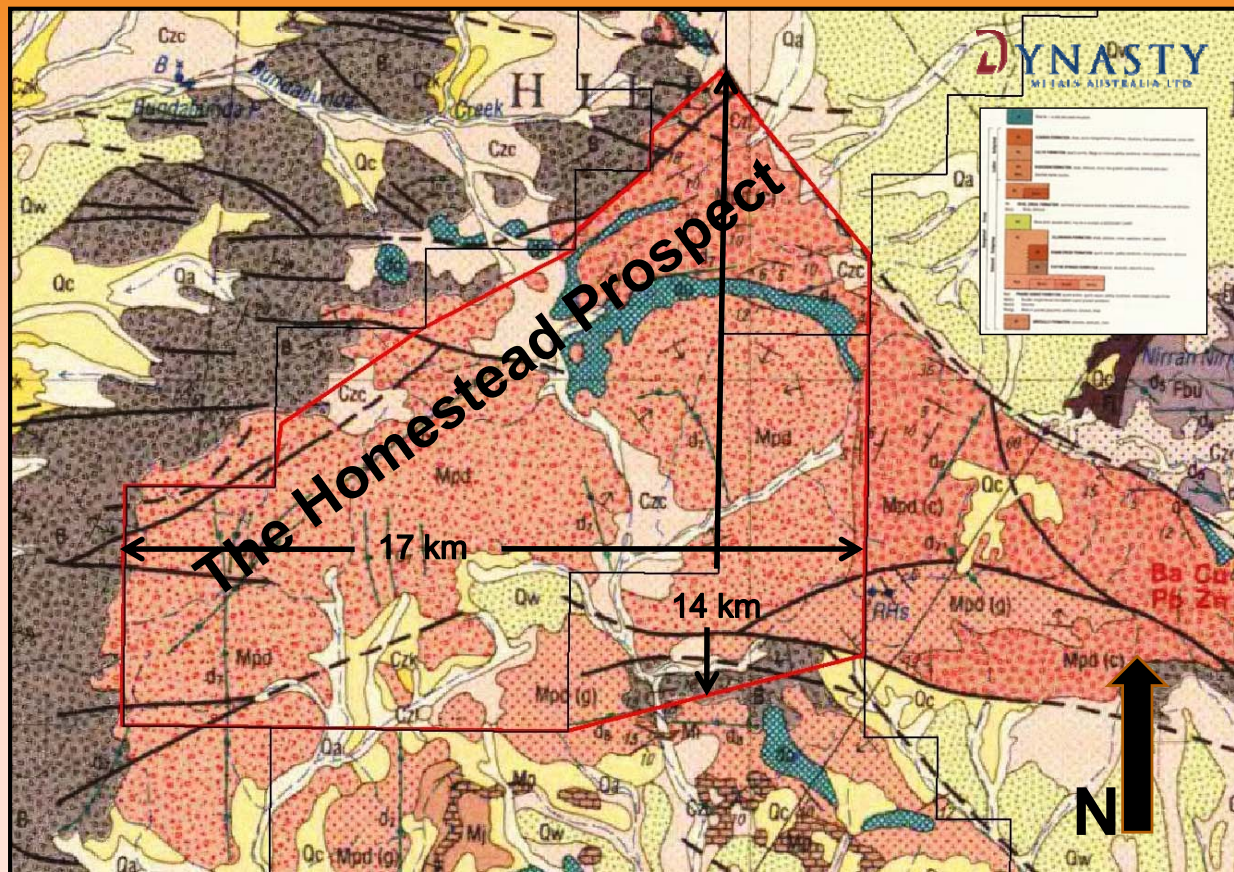
# Homestead Deposit

## Basal Haematite Iron Conglomerate





**Area within tenement – 138.4km<sup>2</sup>**



**Basal Iron Conglomerate - outcrop**





# Outcrop



## 2010 Exploration Program

## Stage 2 Exploration Program

- **JORC Compliant Resource Drilling** – 20,000m to infill Spearhole Area to define JORC Compliant resource
- **Geophysics and Exploration Drilling** – 8,000m to test for extensions of Spearhole Deposit, new Detrital areas, hidden Marra Mamba
- **Exploration Drilling** – 2,000m to test Homestead Prospect
- **Define JORC Compliant Measured Resources**



## Stage 3 Program

- **Metallurgical Testwork** – bulk samples (>100t) for detailed pilot processing work to define the beneficiation process flow-sheet
- **Feasibility Studies** – mine planning, commercial analysis and infrastructure studies, environmental studies, native title clearances, approvals





# Infrastructure Access, Development

1. Confirm commerciality through Stage 2 and 3 exploration, mine planning and feasibility studies
  2. Develop project of sufficient scale to support required infrastructure in partnership with other emerging producers
- 
1. Various alternative rail routes including existing rail corridors and existing and proposed port facilities
  2. Development target time table – 3 years



## DMA's Proximity Rail Networks



# CORPORATE VISION

**Dynasty's aim is to drive its exploration and commercial project evaluation with the aim to develop a viable iron ore mine and to become an iron ore producer in 3 years**



# THANK YOU





**Qualifying statement:** *Malcolm Carson has compiled the information in this report from information supplied by Dynasty Metals Limited. Malcolm Carson has sufficient experience that is relevant to the style of mineralisation, the types of deposit under consideration and to the activity that he is undertaking and qualifies as a Competent Person as defined in the 2004 Edition of the Australasian Code for Reporting of Exploration Results. Mr Carson consents to the inclusion in the report of the matters based on his information in the form and context in which it appears.*

