

NORTH SHAW LITHIUM PROJECT UPDATE

29 SEPTEMBER 2016

KEY POINTS

- Drilling program approved for 2,500m of bedrock drilling
- Work to concentrate in the northern portion of the tenement
- Targeting along strike of the large Pilgangoora lithium resources on Altura Mining (ASX:AJM) and Pilbara Minerals (ASX:PLS) ground
- Work will commence following heritage clearance being completed

Dynasty Resources Limited (Dynasty or Company) is pleased to announce a planned drilling program on the North Shaw project (E45/2728). The project is considered highly prospective for lithium mineralisation within lithium-cesium-tantalum (LCT) pegmatites. A program of work has been approved by the Department of Mines and Energy for 2,500m of RC drilling. A heritage survey is being organised and drilling will be commenced as soon as practical following completion of this.

This drilling is designed to test for the continuation, along strike, of the large Pilgangoora lithium resources on Altura Mining (ASX:AJM) and Pilbara Minerals (ASX:PLS) ground. Reconnaissance mapping discovered extensive pegmatites within the mafic units of the Sulphur Springs Group and the sediments of the Gorge Creek Group. These units are interpreted to be present under cover in the north of the tenement and may contain lithium bearing pegmatites similar to those found within the Pilgangoora resource area.

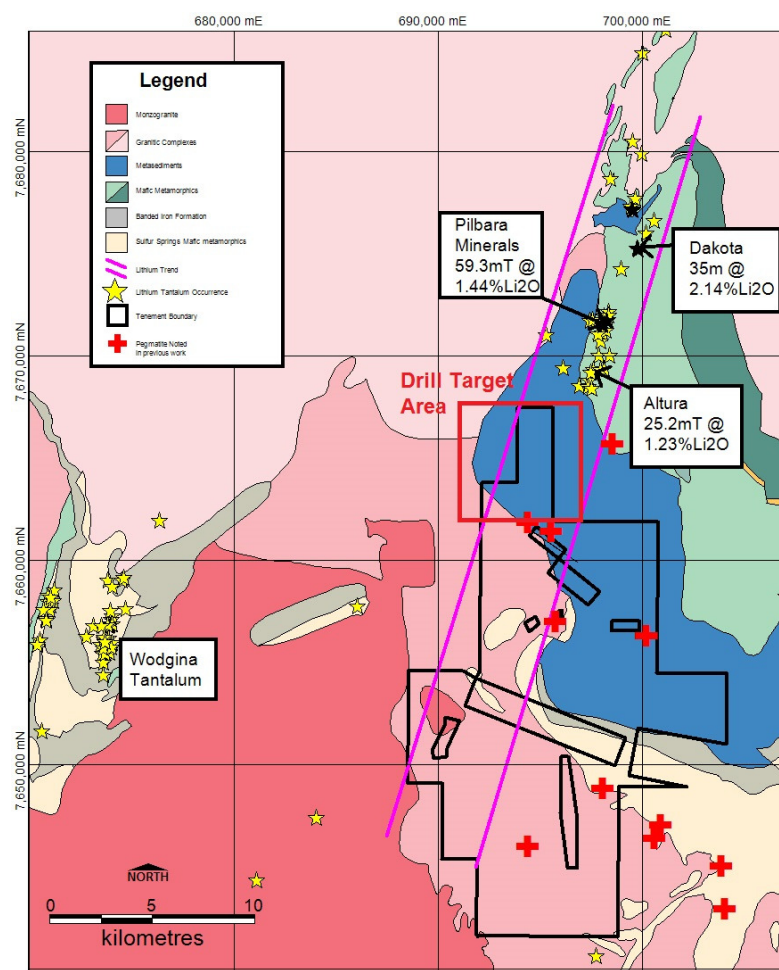


Figure 1.

Simplified geology and regional mineralisation with location of drilling program - North Shaw Project

The target of the drilling will be to identify any pegmatites in the bedrock and to test for lithium anomalies.

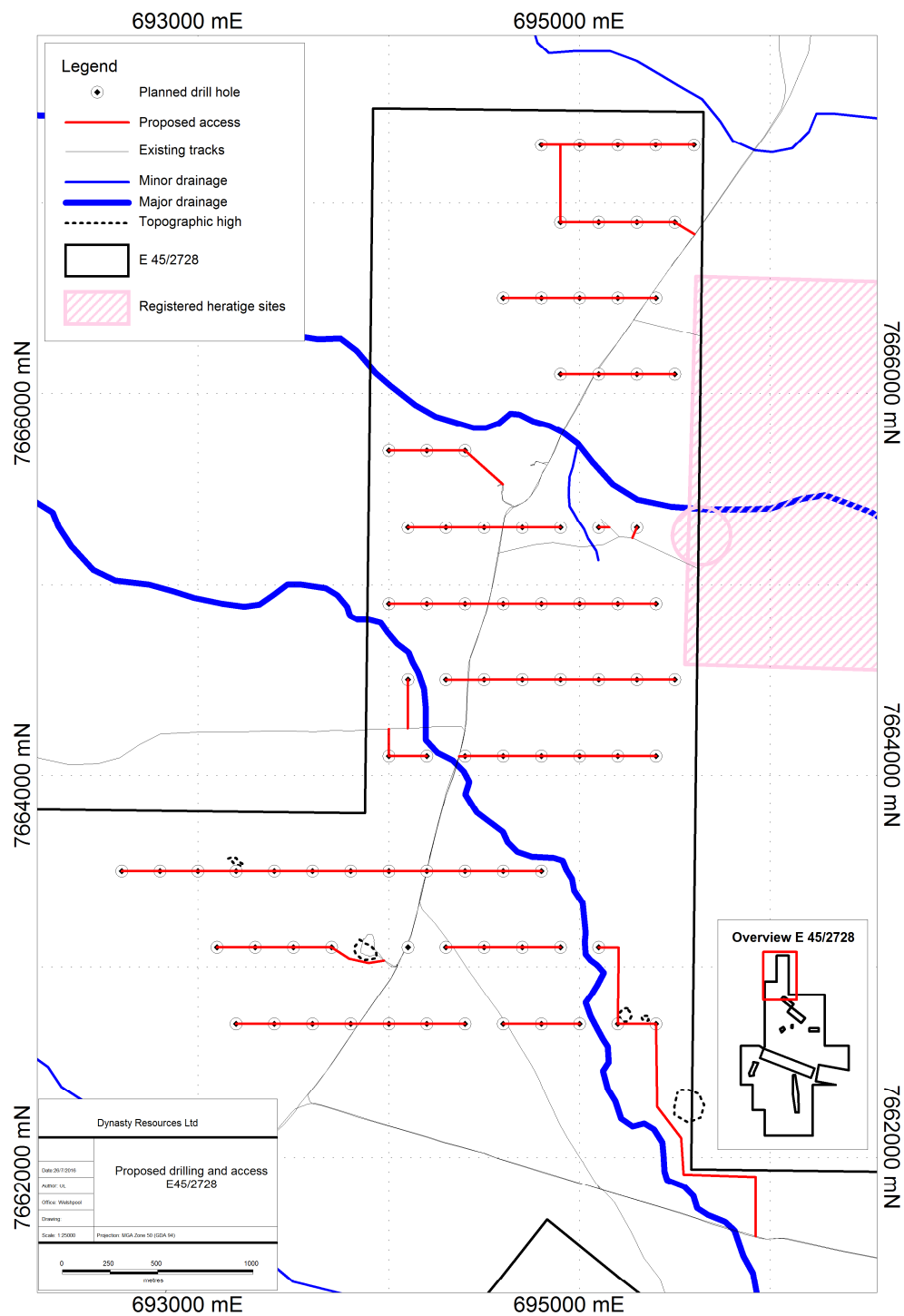


Figure 2 Planned Drilling program

PROJECT DETAILS

Dynasty owns tenement E 45/2728-I that sits adjacent to significant lithium resources in the Pilgangoora area of the East Pilbara region in Western Australia. Dynasty has completed an initial evaluation of the lithium potential and consider the ground being highly prospective with known pegmatites in the area, and a continuation of the Pilgangoora mineralised corridor through the tenement and large areas of lithologies conducive to the intrusion of lithium pegmatites.

These lithologies include mafic metamorphics, similar to those hosting the Wodgina and Pilgangoora pegmatites and sedimentary metamorphics which commonly host lithium pegmatites in other parts of the world.

The tenement is surrounded by competitors actively searching for lithium.

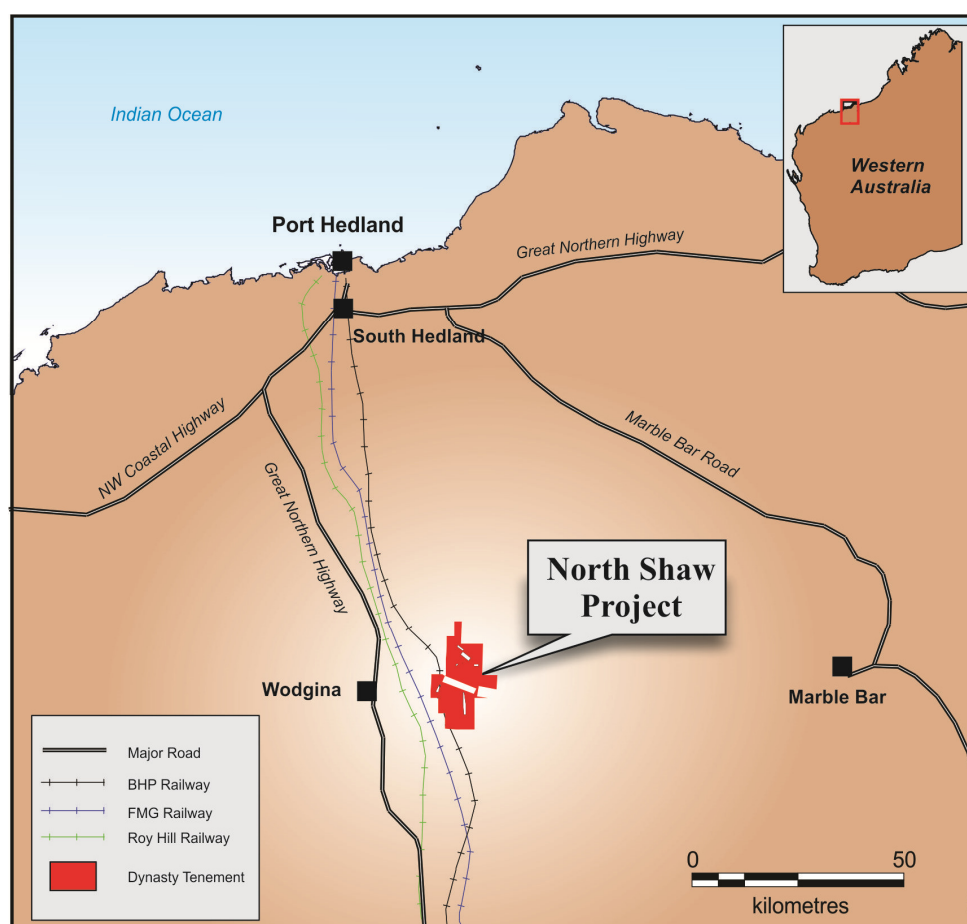


Figure 3 North Shaw - Project location

COMPETENT PERSONS STATEMENT

The information in this report that relates to exploration results and mineral resource calculations has been compiled by Mr David Jenkins, a full time employee of Terra Search Pty Ltd, geological consultants employed by Dynasty Resources Limited. Mr Jenkins is a Member of the Australian Institute of Geoscientists and has sufficient experience in the style of mineralisation and type of deposit under consideration and the activity which they are undertaking to qualify as Competent Persons as defined in the 2012 Edition of the Australasian Code for Reporting of Exploration Results ("JORC Code"). Mr Jenkins consents to the inclusion in the report of the matters based on the information in the form and context in which it appears.