

17 December 2013

ASX Announcement

GRANT OF NEW GOLD/COPPER TENEMENTS IN EASTERN GOLDFIELDS

Dynasty Resources Ltd (ASX: DMA) is pleased to announce the granting of two tenements E38/2842 and E38/2846 covering an area of 26.8km² within the Eastern Goldfields Terrane. These tenements lie approximately 12km to the southwest of Laverton in close proximity to both the Granny Smith and Sunrise mines that between them have produced approximately 10 Million ounces of gold throughout their respective histories.

The tenements are in a similar geological setting to these nearby deposits with potential to host large-scale gold and/or copper mineralization.

The two areas granted are the first stage of ground acquisition in this area, with two more tenement applications (E38/2843 and E38/2845) still pending.

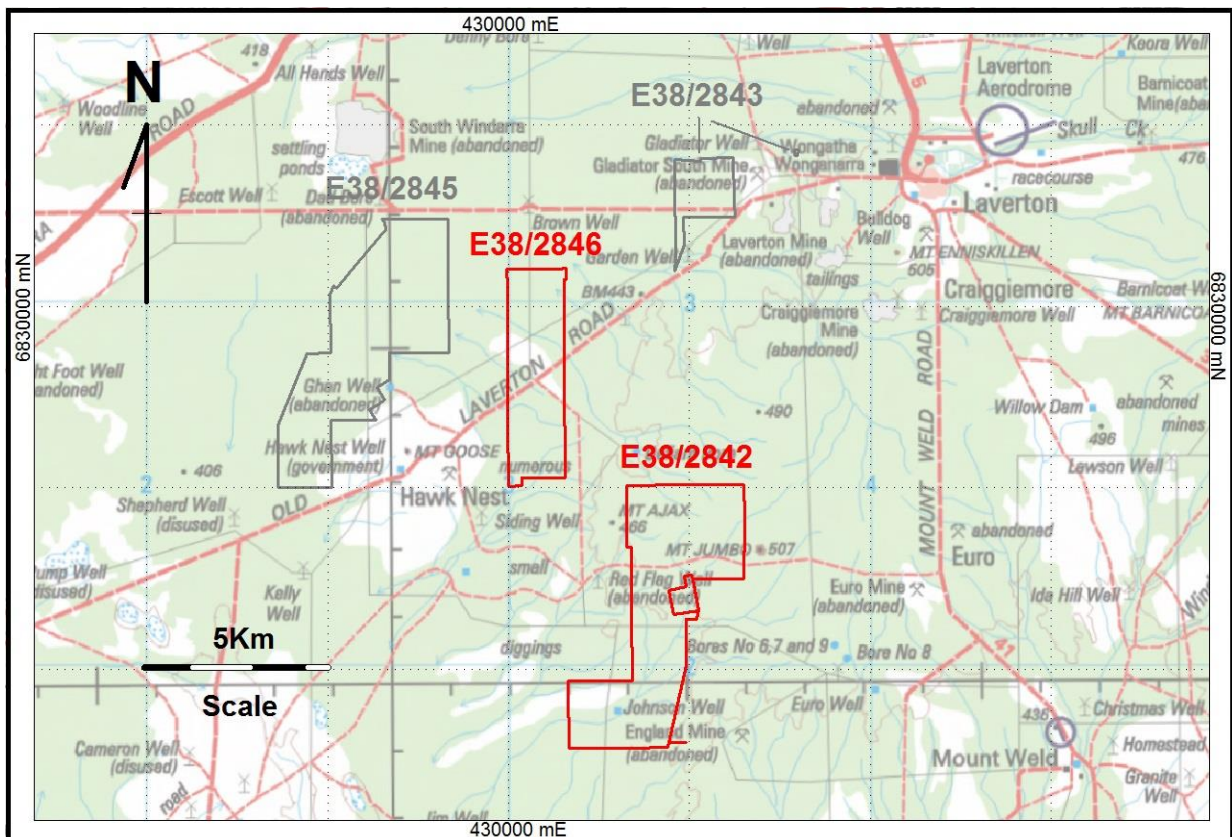


Figure 1: DMA Laverton tenements E38/2842, E38/2846 (granted) & E38/2843 and E38/2845 (pending).

Preliminary interpretation of mapped lithologies, regional magnetics and structures has identified a number of corridors to be targeted for exploration of these tenements. It appears that these areas are historically underexplored and thus potential remains for an aggressive exploration program that will soon be undertaken by Dynasty.

Previous work has been completed in the area. Historical drilling was widespread but mostly very shallow penetration. Work will commence shortly on the field evaluation of the tenements with reconnaissance mapping and sampling, followed by geophysics and, if warranted, drilling will commence.

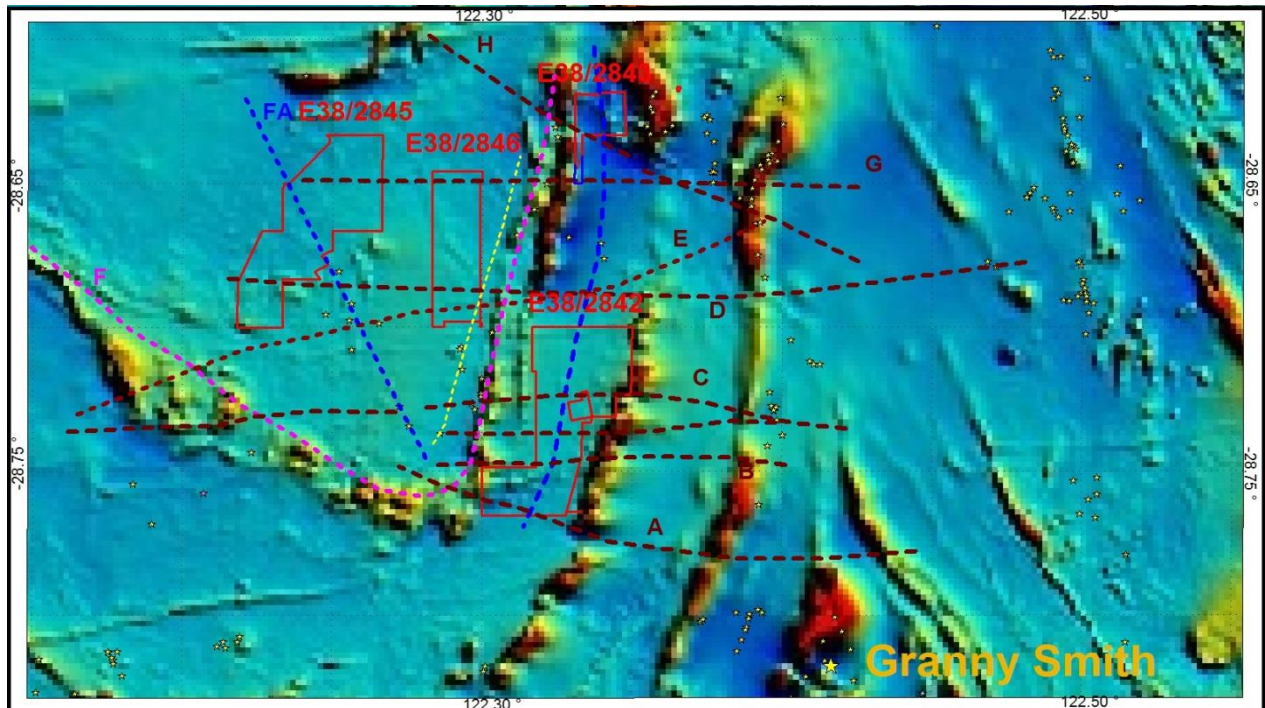


Figure 2, Laverton tenements with identified structures and regional magnetics.

COMPETENT PERSONS STATEMENT

Qualifying Statement: The information in this report that relates to exploration results and mineral resource calculations has been compiled by Mr David Jenkins a full time employee of Terra Search Pty Ltd, geological consultants employed by Dynasty Resources Ltd. Mr Jenkins is a Member of the Australian Institute of Geoscientists and has sufficient experience in the style of mineralisation and type of deposit under consideration and the activity which they are undertaking to qualify as Competent Persons as defined in the 2004 Edition of the Australasian Code for Reporting of Exploration Results ("JORC Code"). Mr Jenkins consents to the inclusion in the report of the matters based on the information in the form and context in which it appears.

Enquiries:
 Lewis Tay
 Managing Director
 (08) 6316 4414